

À des fins de recherche uniquement

Anticorps Recombinant de lapin anti-BCL6



Numéro de catalogue: 81754-1-RR

Informations de base

Numéro de catalogue: 81754-1-RR	Numéro d'acquisition GenBank: BC150184	Méthode de purification: Purification par protéine A
Taille: 100ul, Concentration: 1000 µg/ml by Nanodrop;	Identification du gène (NCBI): 604	CloneNo.: 3K6
Hôte: Lapin	Nom complet: B-cell CLL/lymphoma 6	Dilutions recommandées: WB 1:5000-1:50000 IHC 1:500-1:2000
Isotype: IgG	MW calculé: 706 aa, 79 kDa	
Immunogen Catalog Number: AG15519	MW observés: 79-95 kDa	

Applications

Applications testées: FC, IHC, WB, ELISA	Contrôles positifs: WB : cellules Ramos, cellules Daudi
Spécificité de l'espèce: Humain	IHC : tissu d'amygdalite humain,

Remarque-IHC: il est suggéré de démasquer l'antigène avec un tampon de TE buffer pH 9.0; (*) À défaut, 'le démasquage de l'antigène peut être effectué avec un tampon citrate pH 6,0.

Informations générales

BCL6, a zinc finger transcription factor, contains an N-terminal BTB/POZ domain and C-terminal zinc finger DNA-binding motifs and represses transcription of a wide range of target proteins and microRNAs. BCL6 protein has been reported as a master regulator of B lymphocyte development and growth, and altered BCL6 protein expression was implicated in pathogenesis of diverse human hematologic malignancies, especially in the diffuse large B cell lymphoma (DLBCL). BCL6 is required for the development of T follicular helper T cells (TFH), a helper T cell subset required for the formation of mature and productive GCs. BCL6 has also been shown to play important regulatory roles in macrophages.

Stockage

Stockage:
Stocker à -20°C. Stable pendant un an après l'expédition.
Tampon de stockage:
PBS avec azotate de sodium à 0,02 % et glycérol à 50 % pH 7,3
L'aliquotage n'est pas nécessaire pour le stockage à -20C

*** Les 20ul contiennent 0,1% de BSA.

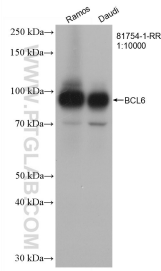
For technical support and original validation data for this product please contact:

T: 1 (888) 4PTGLAB (1-888-478-4522) (toll free
in USA), or 1(312) 455-8498 (outside USA)

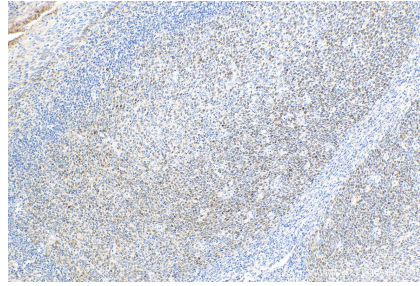
E: proteintech@ptglab.com
W: ptglab.com

This product is exclusively available under Proteintech Group brand and is not available to purchase from any other manufacturer.

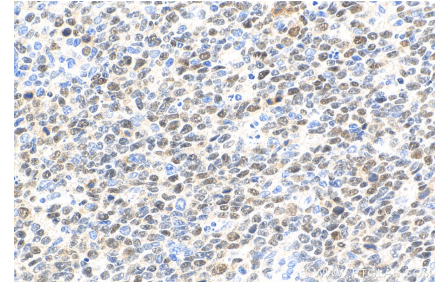
Données de validation sélectionnées



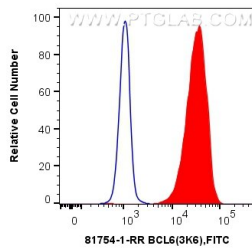
Various lysates were subjected to SDS PAGE followed by western blot with 81754-1-RR (BCL6 antibody) at dilution of 1:10000 incubated at room temperature for 1.5 hours.



Immunohistochemical analysis of paraffin-embedded human tonsillitis tissue slide using 81754-1-RR (BCL6 antibody) at dilution of 1:1000 (under 10x lens). Heat mediated antigen retrieval with Tris-EDTA buffer (pH 9.0).



Immunohistochemical analysis of paraffin-embedded human tonsillitis tissue slide using 81754-1-RR (BCL6 antibody) at dilution of 1:1000 (under 40x lens). Heat mediated antigen retrieval with Tris-EDTA buffer (pH 9.0).



1X10⁶ Ramos cells were intracellularly stained with 0.2 ug Anti-Human BCL6 (81754-1-RR, Clone:3K6) and CoraLite®488-Conjugated AffiniPure Goat Anti-Rabbit IgG(H+L) at dilution 1:1000 (red), or 0.2 ug Control Antibody. Cells were fixed with 4% PFA and permeabilized with Flow Cytometry Perm Buffer (PF00011-C).