

À des fins de recherche uniquement

# Anticorps Recombinant de lapin anti-PIN1



Numéro de catalogue: 81857-1-RR

## Informations de base

<b>Numéro de catalogue:</b> 81857-1-RR	<b>Numéro d'acquisition GenBank:</b> BC002899	<b>Méthode de purification:</b> Purification par protéine A
<b>Taille:</b> 100ul , Concentration: 1000 µg/ml by Nanodrop;	<b>Identification du gène (NCBI):</b> 5300	<b>CloneNo.:</b> 5N20
<b>Hôte:</b> Lapin	<b>Nom complet:</b> peptidylprolyl cis/trans isomerase, NIMA-interacting 1	<b>Dilutions recommandées:</b> WB 1:5000-1:50000 IP 0.5-4.0 ug for IP and 1:5000-1:50000 for WB
<b>Isotype:</b> IgG	<b>MW calculé:</b> 18 kDa	<b>IHC 1:500-1:2000</b> <b>IF 1:200-1:800</b>
<b>Immunogen Catalog Number:</b> AG0767	<b>MW observés:</b> 18 kDa	

## Applications

### Applications testées:

IF, IHC, IP, WB, ELISA

### Spécificité de l'espèce:

Humain, porc, rat, souris

**Remarque-IHC: il est suggéré de démasquer l'antigène avec un tampon de TE buffer pH 9,0; (\*) À défaut, 'le démasquage de l'antigène peut être effectué avec un tampon citrate pH 6,0.**

### Contrôles positifs:

**WB :** cellules HEK-293, cellules HeLa, cellules Jurkat, cellules K-562, tissu cérébral de porc, tissu cérébral de rat, tissu cérébral de souris

**IP :** cellules HepG2, cellules NIH/3T3

**IHC :** tissu de cancer du pancréas humain,

**IF :** cellules NIH/3T3,

## Informations générales

PIN1(Peptidyl-prolyl cis-trans isomerase NIMA-interacting 1) is essential for mitosis progression in yeast cells and is hypothesized to perform the same role in mammalian cells. It might regulate cellular processes distinct from the cell cycle itself, such as terminal differentiation through a modulation of differentiation-specific gene expression(PMID:20801874). It colocalizes with NEK6 in the nucleus. Pin1 inhibition simultaneously blocks multiple cancer pathways, disrupts the desmoplastic and immunosuppressive TME, and upregulates PD-L1 and ENT1, rendering pancreatic ductal adenocarcinoma (PDAC) eradicable by immunochemotherapy (PMID: 34388391).

## Stockage

### Stockage:

Stocker à -20°C. Stable pendant un an après l'expédition.

### Tampon de stockage:

PBS avec azoture de sodium à 0,02 % et glycérol à 50 % pH 7,3

L'aliquotage n'est pas nécessaire pour le stockage à -20C

\*\*\* Les 20ul contiennent 0,1% de BSA.

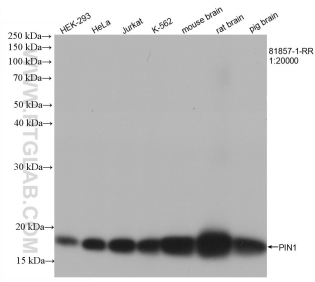
For technical support and original validation data for this product please contact:

T: 1 (888) 4PTGLAB (1-888-478-4522) (toll free in USA), or 1(312) 455-8498 (outside USA)

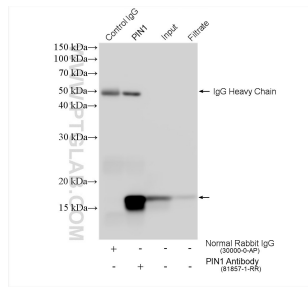
E: proteintech@ptglab.com  
W: ptglab.com

This product is exclusively available under Proteintech Group brand and is not available to purchase from any other manufacturer.

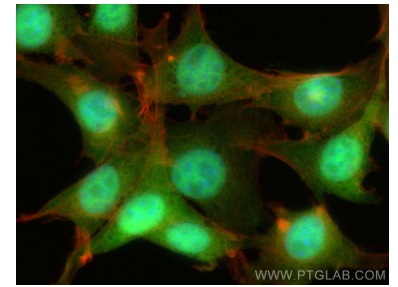
## Données de validation sélectionnées



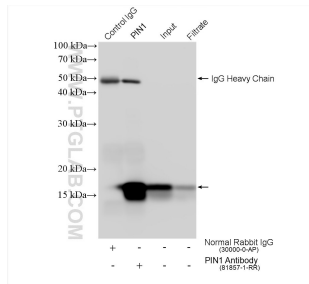
Various lysates were subjected to SDS PAGE followed by western blot with 81857-1-RR (PIN1 antibody) at dilution of 1:20000 incubated at room temperature for 1.5 hours.



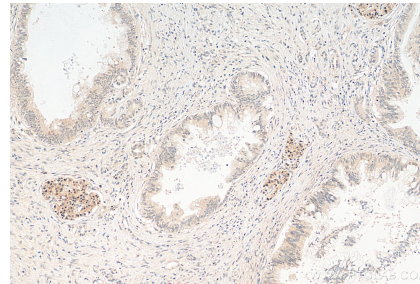
IP result of anti-PIN1(IP:81857-1-RR, 4ug; Detection:81857-1-RR 1:20000) with HepG2 cells lysate 1920 ug.



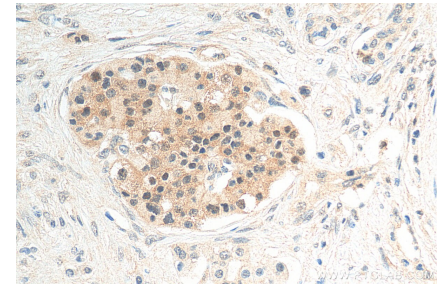
Immunofluorescent analysis of (4% PFA) fixed NIH/3T3 cells using PIN1 antibody (81857-1-RR, Clone: 5N20) at dilution of 1:400 and CoraLite®488-Conjugated AffiniPure Goat Anti-Rabbit IgG(H+L), CL594-Phalloidin (red).



IP result of anti-PIN1(IP:81857-1-RR, 4ug; Detection:81857-1-RR 1:20000) with NIH/3T3 cells lysate 1120 ug.



Immunohistochemical analysis of paraffin-embedded human pancreas cancer tissue slide using 81857-1-RR (PIN1 antibody) at dilution of 1:1000 (under 10x lens). Heat mediated antigen retrieval with Tris-EDTA buffer (pH 9.0).



Immunohistochemical analysis of paraffin-embedded human pancreas cancer tissue slide using 81857-1-RR (PIN1 antibody) at dilution of 1:1000 (under 40x lens). Heat mediated antigen retrieval with Tris-EDTA buffer (pH 9.0).