

À des fins de recherche uniquement

Anticorps Recombinant de lapin anti-Phospho-CREB1 (Ser133)



Numéro de catalogue: 81871-1-RR

Informations de base

Numéro de catalogue: 81871-1-RR	Numéro d'acquisition GenBank: BC010636	Méthode de purification: Purification par protéine A
Taille: 100ul, Concentration: 1000 µg/ml by Nanodrop;	Identification du gène (NCBI): 1385	CloneNo.: 5H5
Hôte: Lapin	Nom complet: cAMP responsive element binding protein 1	Dilutions recommandées: WB 1:5000-1:50000 IHC 1:1000-1:4000
Isotype: IgG	MW calculé 341 aa, 35 kDa MW observés: 35-46 kDa	

Applications

Applications testées:

IHC, WB, ELISA

Spécificité de l'espèce:

Humain

Contrôles positifs:

WB : cellules HEK-293 traitées à la calyculine A,

IHC : tissu de cancer de la prostate humain,

Remarque-IHC: il est suggéré de démasquer l'antigène avec un tampon de TE buffer pH 9,0; (*) À défaut, 'le démasquage de l'antigène peut être effectué avec un tampon citrate pH 6,0.

Informations générales

The cAMP-response element binding protein (CREB) is localized in the nucleus and acts as a transcription factor, which binds to the cAMP response element (CRE) of the promoters of its target genes, upon phosphorylation at Ser133 by different receptor-activated protein kinases, such as protein kinase A (PKA), calmodulin-dependent protein kinase (CaMK), mitogen-activated protein kinases (MAPK), and other kinases. The activity of CREB1 in neurons has been correlated with various intracellular processes, including proliferation, differentiation, survival, long-term synaptic potentiation, neurogenesis, and neuronal plasticity. CREB1 belongs to the CREB/activating transcription factor (ATF) family of transcription factors. The antibody also detects the phosphorylated form of the CREB-related protein ATF1. (PMID: 30214393, PMID: 33917483, PMID: 32605164)

Stockage

Stockage:

Stocker à -20°C. Stable pendant un an après l'expédition.

Tampon de stockage:

PBS avec azotate de sodium à 0,02 % et glycérol à 50 % pH 7,3

L'aliquotage n'est pas nécessaire pour le stockage à -20C

***** Les 20ul contiennent 0,1% de BSA.**

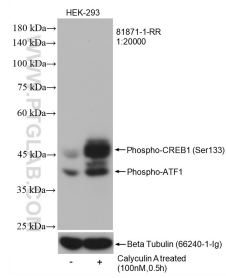
For technical support and original validation data for this product please contact:

T: 1 (888) 4PTGLAB (1-888-478-4522) (toll free
in USA), or 1(312) 455-8498 (outside USA)

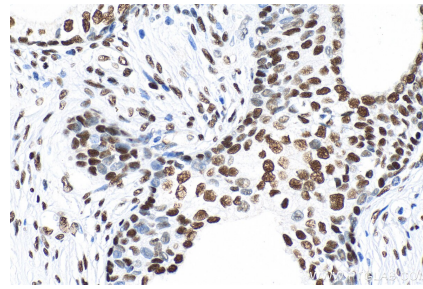
E: proteintech@ptglab.com
W: ptglab.com

This product is exclusively available under Proteintech Group brand and is not available to purchase from any other manufacturer.

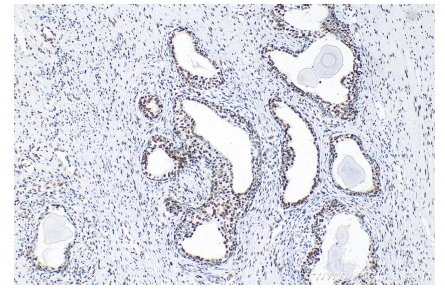
Données de validation sélectionnées



Non-treated and Calyculin A treated HEK-293 cells were subjected to SDS PAGE followed by western blot with 81871-1-RR (Phospho-CREB1 (Ser133) antibody) at dilution of 1:20000 incubated at room temperature for 1 hours. The membrane was stripped and re-blotted with Beta-tubulin antibody as loading control.



Immunohistochemical analysis of paraffin-embedded human prostate cancer tissue slide using 81871-1-RR (Phospho-CREB1 (Ser133) antibody) at dilution of 1:2000 (under 40x lens). Heat mediated antigen retrieval with Tris-EDTA buffer (pH 9.0).



Immunohistochemical analysis of paraffin-embedded human prostate cancer tissue slide using 81871-1-RR (Phospho-CREB1 (Ser133) antibody) at dilution of 1:2000 (under 10x lens). Heat mediated antigen retrieval with Tris-EDTA buffer (pH 9.0).