

À des fins de recherche uniquement

# Anticorps Recombinant de lapin anti-GP73/GOLPH2



Numéro de catalogue: 81893-1-RR

## Informations de base

Numéro de catalogue: 81893-1-RR	Numéro d'acquisition GenBank: BC001740	Méthode de purification: Purification par protéine A
Taille: 100ul, Concentration: 500 µg/ml by Nanodrop;	Identification du gène (NCBI): 51280	CloneNo.: 1I12
Hôte: Lapin	Nom complet: golgi membrane protein 1	Dilutions recommandées: WB 1:5000-1:50000 IF 1:450-1:1800
Isotype: IgG	MW calculé 45 kDa	
Immunogen Catalog Number: AG7207	MW observés: 70-75 kDa	

## Applications

Applications testées: IF, WB, ELISA	Contrôles positifs:
Spécificité de l'espèce: Humain	WB : cellules HEK-293, cellules HeLa, cellules MCF-7 IF : cellules HeLa,

## Informations générales

Golgi phosphoprotein 2 (GOLPH2, also known as GP73 or GOLM1) is a resident Golgi type-II membrane protein. It is predominantly expressed in the epithelial cells of many human tissues. GOLPH2 traffics through endosomes and can be secreted into the circulation. Its expression is upregulated in a number of tumors and GOLPH2 could be a promising serum marker for hepatocellular carcinoma. We got 70-75 kDa in western blotting due to phosphorylation.

## Stockage

**Stockage:**  
Stocker à -20°C. Stable pendant un an après l'expédition.  
**Tampon de stockage:**  
PBS avec azoture de sodium à 0,02 % et glycérol à 50 % pH 7,3  
L'aliquotage n'est pas nécessaire pour le stockage à -20C

**\*\*\* Les 20ul contiennent 0,1% de BSA.**

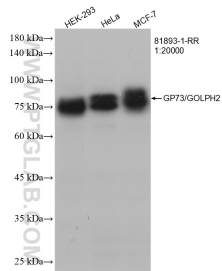
For technical support and original validation data for this product please contact:

T: 1 (888) 4PTGLAB (1-888-478-4522) (toll free  
in USA), or 1(312) 455-8498 (outside USA)

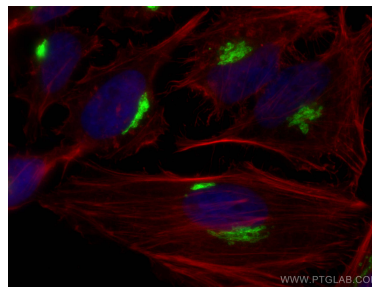
E: [proteintech@ptglab.com](mailto:proteintech@ptglab.com)  
W: [ptglab.com](http://ptglab.com)

**This product is exclusively available under Proteintech Group brand and is not available to purchase from any other manufacturer.**

## Données de validation sélectionnées



Various lysates were subjected to SDS PAGE followed by western blot with 81893-1-RR (GP73/GOLPH2 antibody) at dilution of 1:20000 incubated at room temperature for 1.5 hours.



Immunofluorescent analysis of (4% PFA) fixed HeLa cells using GP73/GOLPH2 antibody (81893-1-RR, Clone: 1112 ) at dilution of 1:900 and CoraLite®488-Conjugated AffiniPure Goat Anti-Rabbit IgG(H+L), CL594-Phalloidin (red).