

À des fins de recherche uniquement

Anticorps Recombinant de lapin anti-STAT1



Numéro de catalogue: 82016-1-RR

Phare

Informations de base

Numéro de catalogue: 82016-1-RR	Numéro d'acquisition GenBank: BC002704	Méthode de purification: Purification par protéine A
Taille: 100ul , Concentration: 1000 µg/ml by Nanodrop;	Identification du gène (NCBI): 6772	CloneNo.: 2F16
Hôte: Lapin	Nom complet: signal transducer and activator of transcription 1, 91kDa	Dilutions recommandées: WB 1:5000-1:50000 IP 0.5-4.0 ug for IP and 1:5000-1:50000 for WB IHC 1:200-1:800
Isotype: IgG	MW calculé: 83 kDa	
Immunogen Catalog Number: AG0199	MW observés: 84 kDa	

Applications

Applications testées:

IHC, IP, WB, ELISA

Spécificité de l'espèce:

Humain, rat, souris

Remarque-IHC: il est suggéré de démasquer l'antigène avec un tampon de TE buffer pH 9,0; (*) À défaut, 'le démasquage de l'antigène peut être effectué avec un tampon citrate pH 6,0.

Contrôles positifs:

WB : cellules HEK-293, cellules A549, cellules HeLa, cellules HSC-T6, cellules Jurkat, cellules K-562, cellules NIH/3T3

IP : cellules PC-3,

IHC : tissu de tumeur ovarienne humain, tissu de côlon de rat, tissu de côlon de souris, tissu splénique de rat, tissu splénique de souris

Informations générales

STAT1 (signal transducers and activators of transcription 1) is a member of the STAT protein family. In response to cytokines and growth factors, STAT family members are phosphorylated by the receptor associated kinases, and then form homo- or heterodimers that translocate to the cell nucleus where they act as transcription activators. Various ligands, including interferons- and -, EGF, PDGF and IL-6, can activate STAT1. STAT1 protein mediates the expression of a variety of genes, which is thought to be important for cell viability in response to different cell stimuli and pathogens.

Stockage

Stockage:

Stocker à -20°C. Stable pendant un an après l'expédition.

Tampon de stockage:

PBS avec azoture de sodium à 0,02 % et glycérol à 50 % pH 7,3

L'aliquotage n'est pas nécessaire pour le stockage à -20C

*** Les 20ul contiennent 0,1% de BSA.

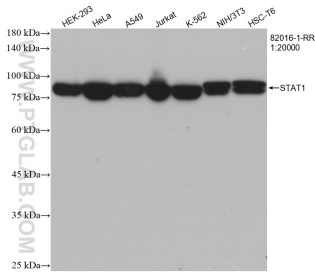
For technical support and original validation data for this product please contact:

T: 1 (888) 4PTGLAB (1-888-478-4522) (toll free in USA), or 1(312) 455-8498 (outside USA)

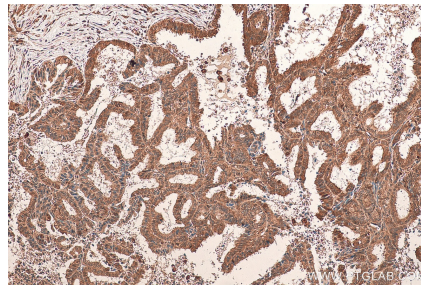
E: proteintech@ptglab.com
W: ptglab.com

This product is exclusively available under Proteintech Group brand and is not available to purchase from any other manufacturer.

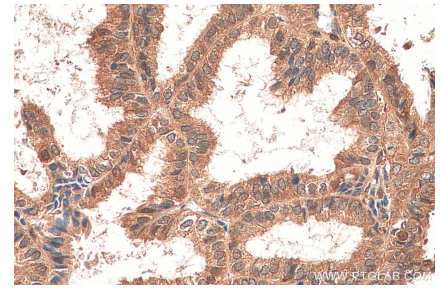
Données de validation sélectionnées



Various lysates were subjected to SDS PAGE followed by western blot with 82016-1-RR (STAT1 antibody) at dilution of 1:20000 incubated at room temperature for 1.5 hours.



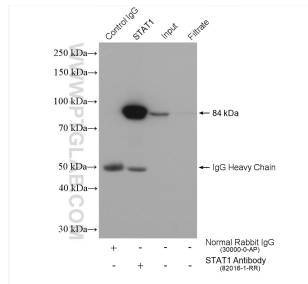
Immunohistochemical analysis of paraffin-embedded human ovary tumor tissue slide using 82016-1-RR (STAT1 antibody) at dilution of 1:400 (under 10x lens). Heat mediated antigen retrieval with Tris-EDTA buffer (pH 9.0).



Immunohistochemical analysis of paraffin-embedded human ovary tumor tissue slide using 82016-1-RR (STAT1 antibody) at dilution of 1:400 (under 40x lens). Heat mediated antigen retrieval with Tris-EDTA buffer (pH 9.0).



WB result of STAT1 antibody (82016-1-RR; 1:40000; incubated at room temperature for 1.5 hours) with sh-Control and sh-STAT1 transfected HEK-293 cells.



IP result of anti-STAT1(IP:82016-1-RR, 4ug; Detection:82016-1-RR 1:10000) with PC-3 cells lysate 2000 ug.