

À des fins de recherche uniquement

Anticorps Recombinant de lapin anti-Cyclin A2



Numéro de catalogue: 82148-1-RR

Informations de base

Numéro de catalogue: 82148-1-RR	Numéro d'acquisition GenBank: BC104783	Méthode de purification: Purification par protéine A
Taille: 100ul, Concentration: 1000 µg/ml by Nanodrop;	Identification du gène (NCBI): 890	CloneNo.: 1C23
Hôte: Lapin	Nom complet: cyclin A2	Dilutions recommandées: WB 1:5000-1:50000 IP 0.5-4.0 ug for IP and 1:1000-1:6000 for WB
Isotype: IgG	MW calculé: 432 aa, 49 kDa	
Immunogen Catalog Number: AG12765	MW observés: 52 kDa	

Applications

Applications testées:
IP, WB, ELISA

Spécificité de l'espèce:
Humain, souris

Contrôles positifs:

WB : cellules HEK-293, cellules HeLa, cellules HepG2,
cellules HSC-T6, cellules Jurkat, cellules K-562,
cellules NIH/3T3

IP : cellules HeLa,

Informations générales

Cyclin A2 belongs to the highly conserved cyclin family, whose members are characterized by a dramatic periodicity in protein abundance through the cell cycle. Cyclins function as regulators of CDK kinases. Different cyclins exhibit distinct expression and degradation patterns which contribute to the temporal coordination of each mitotic event. In contrast to cyclin A1, which is present only in germ cells, this cyclin is expressed in all tissues tested. Cyclin A2 binds and activates CDC2 or CDK2 kinases, and thus promotes both cell cycle G1/S and G2/M transitions. Cyclin A2 could be phosphorylated during the G2/M.

Stockage

Stockage:

Stocker à -20°C. Stable pendant un an après l'expédition.

Tampon de stockage:

PBS avec azoture de sodium à 0,02 % et glycérol à 50 % pH 7,3

L'aliquotage n'est pas nécessaire pour le stockage à -20C

*** Les 20ul contiennent 0,1% de BSA.

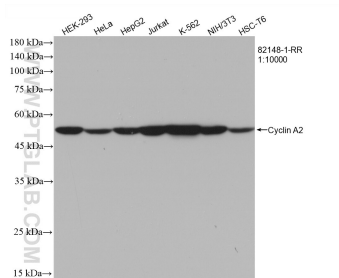
For technical support and original validation data for this product please contact:

T: 1 (888) 4PTGLAB (1-888-478-4522) (toll free
in USA), or 1(312) 455-8498 (outside USA)

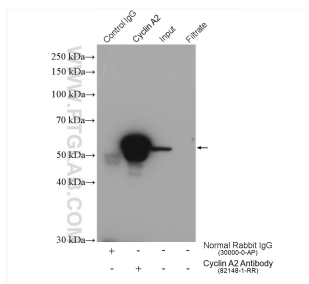
E: proteintech@ptglab.com
W: ptglab.com

This product is exclusively available under Proteintech Group brand and is not available to purchase from any other manufacturer.

Données de validation sélectionnées



Various lysates were subjected to SDS PAGE followed by western blot with 82148-1-RR (Cyclin A2 antibody) at dilution of 1:10000 incubated at room temperature for 1.5 hours.



IP result of anti-Cyclin A2(IP:82148-1-RR, 4ug; Detection:82148-1-RR 1:3000) with HeLa cells lysate 1720 ug.