

À des fins de recherche uniquement

Anticorps Recombinant de lapin anti-FIS1



Numéro de catalogue: 82248-1-RR

Informations de base

Numéro de catalogue: 82248-1-RR	Numéro d'acquisition GenBank: BC009428	Méthode de purification: Purification par protéine A
Taille: 100ul , Concentration: 1000 µg/ml by Nanodrop;	Identification du gène (NCBI): 51024	CloneNo.: 6N15
Hôte: Lapin	Nom complet: fission 1 (mitochondrial outer membrane) homolog (S. cerevisiae)	Dilutions recommandées: WB 1:5000-1:50000 IP 0.5-4.0 ug for IP and 1:2000-1:10000 for WB
Isotype: IgG	MW calculé: 17 kDa	IF 1:500-1:2000
Immunogen Catalog Number: AG1409	MW observés: 15 kDa	

Applications

Applications testées:

FC, IF, IP, WB, ELISA

Spécificité de l'espèce:

Humain, rat, souris

Contrôles positifs:

WB : cellules LNCaP, cellules HEK-293, cellules HeLa, cellules HepG2, cellules HSC-T6, cellules Jurkat, cellules NIH/3T3

IP : cellules HeLa,

IF : cellules HepG2,

Informations générales

Fis1 (fission 1) is an integral mitochondrial outer membrane protein that participates in mitochondrial fission by interacting with dynamin-related protein 1 (Drp1). Excessive mitochondrial fission is associated with the pathology of a number of neurodegenerative or neurodevelopmental diseases. Increased expression of Fis1 has been found in Huntington's disease (HD)-affected brain, Alzheimer's disease (AD) patients, and autism spectrum disorder. (PMID: 21257639, 21459773, 23333625)

Stockage

Stockage:

Stocker à -20°C. Stable pendant un an après l'expédition.

Tampon de stockage:

PBS avec azoture de sodium à 0,02 % et glycérol à 50 % pH 7,3

L'aliquotage n'est pas nécessaire pour le stockage à -20C

***** Les 20ul contiennent 0,1% de BSA.**

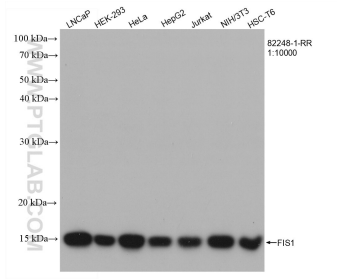
For technical support and original validation data for this product please contact:

T: 1 (888) 4PTGLAB (1-888-478-4522) (toll free in USA), or 1(312) 455-8498 (outside USA)

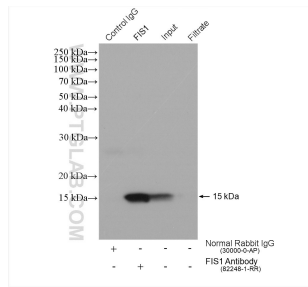
E: proteintech@ptglab.com
W: ptglab.com

This product is exclusively available under Proteintech Group brand and is not available to purchase from any other manufacturer.

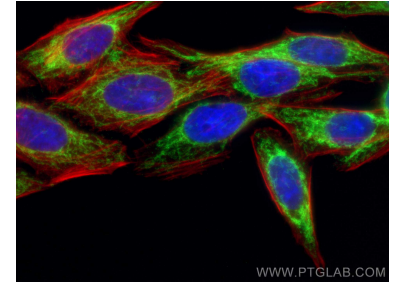
Données de validation sélectionnées



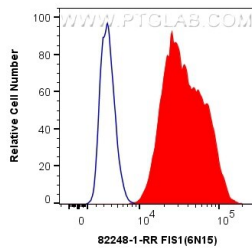
Various lysates were subjected to SDS PAGE followed by western blot with 82248-1-RR (FIS1 antibody) at dilution of 1:10000 incubated at room temperature for 1.5 hours.



IP result of anti-FIS1(IP:82248-1-RR, 4ug; Detection:82248-1-RR 1:5000) with HeLa cells lysate 1720 ug.



Immunofluorescent analysis of (4% PFA) fixed HepG2 cells using FIS1 antibody (82248-1-RR, Clone: 6N15) at dilution of 1:1000 and CoraLite®488-Conjugated AffiniPure Goat Anti-Rabbit IgG(H+L), CL594-Phalloidin (red).



1X10⁶ HepG2 cells were intracellularly stained with 0.4 ug Anti-Human FIS1 (82248-1-RR, Clone:6N15) and CoraLite®488-Conjugated AffiniPure Goat Anti-Rabbit IgG(H+L) at dilution 1:1000 (red), or 0.4 ug Isotype Control. Cells were fixed with 4% PFA and permeabilized with Flow Cytometry Perm Buffer (PF00011-C).