

À des fins de recherche uniquement

# Anticorps Recombinant de lapin anti-ATF6



Numéro de catalogue:82278-1-RR

## Informations de base

Numéro de catalogue: 82278-1-RR	Numéro d'acquisition GenBank: BC014969	Méthode de purification: Purification par protéine A
Taille: 100ul , Concentration: 500 µg/ml by Nanodrop;	Identification du gène (NCBI): 22926	CloneNo.: 208
Hôte: Lapin	Nom complet: activating transcription factor 6	Dilutions recommandées: WB 1:2000-1:10000
Isotype: IgG	MW calculé 75 kDa	
Immunogen Catalog Number: AG21456	MW observés: 90-100 kDa	

## Applications

Applications testées:  
WB, ELISA  
Spécificité de l'espèce:  
Humain

Contrôles positifs:

WB : cellules HEK-293, cellules HeLa, cellules Jurkat, cellules K-562, cellules MCF-7

## Informations générales

Activating transcription factor 6 (ATF6) is a transcription factor that acts during endoplasmic reticulum stress by activating unfolded protein response target genes. Binds DNA on the 5'-CCAC[GA]-3' half of the ER stress response element (ERSE) (5'-CCAAT-N(9)-CCAC[GA]-3') and of ERSE II (5'-ATTGG-N-CCACG-3'). Binding to ERSE requires binding of NF- $\gamma$  to ERSE. Could also be involved in activation of transcription by the serum response factor. During unfolded protein response an approximative 50 kDa fragment containing the cytoplasmic transcription factor domain is released by proteolysis. The cleavage seems to be performed sequentially by site-1 and site-2 proteases. The fully glycosylated form of ATF6, a 670 amino acid protein, exhibits an electrophoretic mobility of ~90 kDa in denaturing SDS-gels, in part because of the glycosylated modifications. ATF6 has 3 consensus sites for N-linked glycosylation and exists constitutively as a glycosylated protein. Differentially glycosylated ATF6 forms may result from mutations or experimental treatment (PMID:15804611) (PMID:14699159).

## Stockage

Stockage:  
Stocker à -20°C. Stable pendant un an après l'expédition.  
Tampon de stockage:  
PBS avec azoture de sodium à 0,02 % et glycérol à 50 % pH 7,3  
L'aliquotage n'est pas nécessaire pour le stockage à -20C

\*\*\* Les 20ul contiennent 0,1% de BSA.

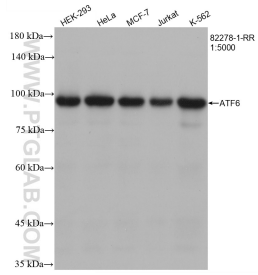
For technical support and original validation data for this product please contact:

T: 1 (888) 4PTGLAB (1-888-478-4522) (toll free  
in USA), or 1(312) 455-8498 (outside USA)

E: [proteintech@ptglab.com](mailto:proteintech@ptglab.com)  
W: [ptglab.com](http://ptglab.com)

This product is exclusively available under Proteintech Group brand and is not available to purchase from any other manufacturer.

## Données de validation sélectionnées



Various lysates were subjected to SDS PAGE followed by western blot with 82278-1-RR (ATF6 antibody) at dilution of 1:5000 incubated at room temperature for 1.5 hours.