

À des fins de recherche uniquement

Anticorps Recombinant de lapin anti-PTPN11/SHP2



Numéro de catalogue: 82503-1-RR **Phare**

Informations de base

Numéro de catalogue: 82503-1-RR	Numéro d'acquisition GenBank: BC008692	Méthode de purification: Purification par protéine A
Taille: 100ul , Concentration: 1000 µg/ml by Nanodrop;	Identification du gène (NCBI): 5781	CloneNo.: 5L23
Hôte: Lapin	Nom complet: protein tyrosine phosphatase, non-receptor type 11	Dilutions recommandées: WB 1:5000-1:50000 IP 0.5-4.0 ug for IP and 1:2000-1:16000 for WB IHC 1:2000-1:8000
Isotype: IgG	MW calculé 597 aa, 68 kDa	
Immunogen Catalog Number: AG13660	MW observés: 68 kDa	

Applications

Applications testées:

IHC, IP, WB, ELISA

Spécificité de l'espèce:

Humain, rat, souris

Remarque-IHC: il est suggéré de démasquer l'antigène avec un tampon de TE buffer pH 9,0; (*) À défaut, 'le démasquage de l'antigène peut être effectué avec un tampon citrate pH 6,0.

Contrôles positifs:

WB : cellules HeLa, cellules A431, cellules A549, cellules HEK-293, cellules HSC-T6, cellules NIH/3T3

IP : cellules HEK-293,

IHC : tissu cardiaque de rat,

Informations générales

PTPN11 (protein tyrosine phosphatase, non-receptor type 11), also named as PTP-1D, PTP2, PTP2C, PTP3, SHP2, CFC, CFC, BPTP3, SH-PTP2, SH-PTP3, and MGC14433, belongs to the protein-tyrosine phosphatase family and non-receptor class 2 subfamily. It modulates and regulates signaling through numerous pathways, many of which are active in the developing endocardial cushions and implicated the ERK pathway as a central mechanism (PMID:19017799). Its signaling may play equally important roles in retinal survival in both physiological and pathological conditions (PMID:21576358). Defects in PTPN11 are the cause of LEOPARD syndrome type 1 (LEOPARD1), Noonan syndrome type 1 (NS1), juvenile myelomonocytic leukemia (JMML), and metachondromatosis (MC). It has 3 isoforms produced by alternative splicing.

Stockage

Stockage:

Stocker à -20°C. Stable pendant un an après l'expédition.

Tampon de stockage:

PBS avec azotate de sodium à 0,02 % et glycérol à 50 % pH 7,3

L'aliquotage n'est pas nécessaire pour le stockage à -20C

***** Les 20ul contiennent 0,1% de BSA.**

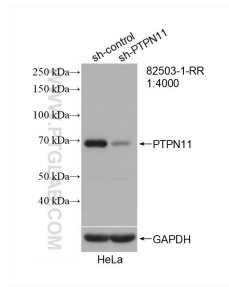
For technical support and original validation data for this product please contact:

T: 1 (888) 4PTGLAB (1-888-478-4522) (toll free in USA), or 1(312) 455-8498 (outside USA)

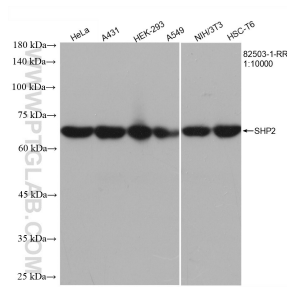
E: proteintech@ptglab.com
W: ptglab.com

This product is exclusively available under Proteintech Group brand and is not available to purchase from any other manufacturer.

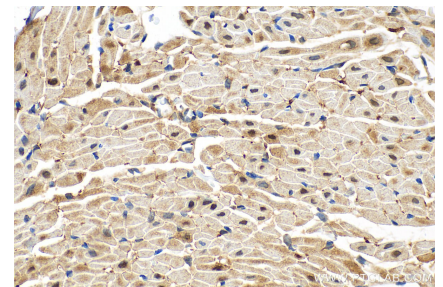
Données de validation sélectionnées



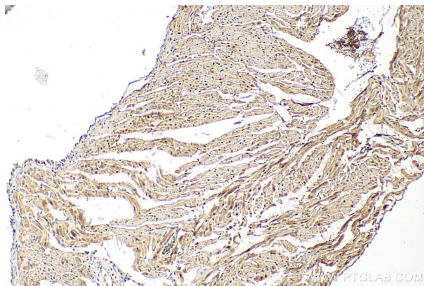
WB result of SHP2 antibody (82503-1-RR; 1:4000; incubated at room temperature for 1.5 hours) with sh-Control and sh-SHP2 transfected HeLa cells.



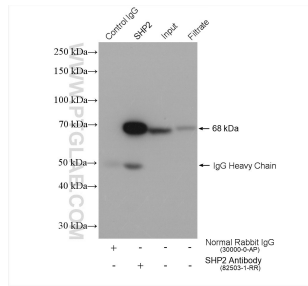
Various lysates were subjected to SDS PAGE followed by western blot with 82503-1-RR (PTPN11 antibody) at dilution of 1:10000 incubated at room temperature for 1.5 hours.



Immunohistochemical analysis of paraffin-embedded rat heart tissue slide using 82503-1-RR (SHP2 antibody) at dilution of 1:4000 (under 40x lens). Heat mediated antigen retrieval with Sodium Citrate buffer (pH 6.0).



Immunohistochemical analysis of paraffin-embedded rat heart tissue slide using 82503-1-RR (SHP2 antibody) at dilution of 1:4000 (under 10x lens). Heat mediated antigen retrieval with Sodium Citrate buffer (pH 6.0).



IP result of anti-SHP2(IP:82503-1-RR, 4ug; Detection:82503-1-RR 1:8000) with HEK-293 cells lysate 1280 ug.