

À des fins de recherche uniquement

Anticorps Recombinant de lapin anti-Stathmin 1



Numéro de catalogue: 82559-1-RR

Informations de base

Numéro de catalogue: 82559-1-RR	Numéro d'acquisition GenBank: BC014353	Méthode de purification: Purification par protéine A
Taille: 100ul, Concentration: 1000 µg/ml by Nanodrop;	Identification du gène (NCBI): 3925	CloneNo.: 2H6
Hôte: Lapin	Nom complet: stathmin 1/oncoprotein 18	Dilutions recommandées: WB 1:2000-1:10000 IHC 1:1000-1:4000 IF 1:500-1:2000
Isotype: IgG	MW calculé 18 kDa	
Immunogen Catalog Number: AG1633	MW observés: 18 kDa	

Applications

Applications testées:
IF, IHC, WB, ELISA

Spécificité de l'espèce:
Humain, rat

Remarque-IHC: il est suggéré de démasquer l'antigène avec un tampon de TE buffer pH 9.0; (*) À défaut, 'le démasquage de l'antigène peut être effectué avec un tampon citrate pH 6,0.

Contrôles positifs:

WB : cellules SH-SY5Y, cellules Jurkat, cellules PC-12

IHC : tissu cérébral de rat,

IF : cellules HeLa, cellules NIH/3T3

Informations générales

Stathmin 1 (STMN1) normally regulates microtubule dynamics either by sequestering free tubulin heterodimers or by promoting microtubule catastrophe. STMN1 is highly expressed in fetal and adult brain, spinal cord, and cerebellum. Many different phosphorylated forms are observed depending on specific combinations among the sites which can be phosphorylated. Phosphorylation of stathmin is involved in response to NGF, neuron polarization and microtubule polymerization inhibition activity. Increased expression of STMN1 has been observed in a variety of human malignancies, such as colorectal primary tumors and metastatic tissues, but its association with melanoma is so far not well known.

Stockage

Stockage:

Stocker à -20°C. Stable pendant un an après l'expédition.

Tampon de stockage:

PBS avec azotate de sodium à 0,02 % et glycérol à 50 % pH 7,3

L'aliquotage n'est pas nécessaire pour le stockage à -20C

*** Les 20ul contiennent 0,1% de BSA.

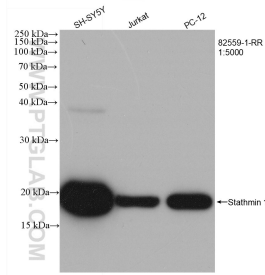
For technical support and original validation data for this product please contact:

T: 1 (888) 4PTGLAB (1-888-478-4522) (toll free
in USA), or 1(312) 455-8498 (outside USA)

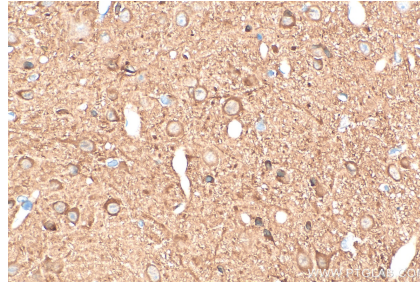
E: proteintech@ptglab.com
W: ptglab.com

This product is exclusively available under Proteintech Group brand and is not available to purchase from any other manufacturer.

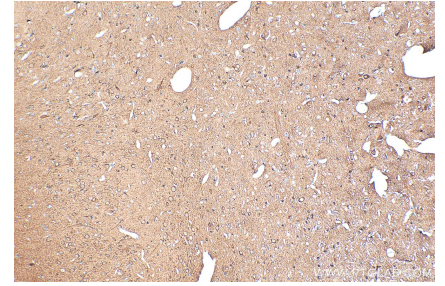
Données de validation sélectionnées



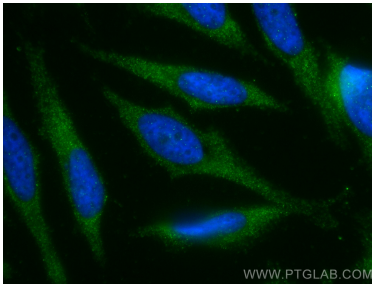
Various lysates were subjected to SDS PAGE followed by western blot with 82559-1-RR (Stathmin 1 antibody) at dilution of 1:5000 incubated at room temperature for 1.5 hours.



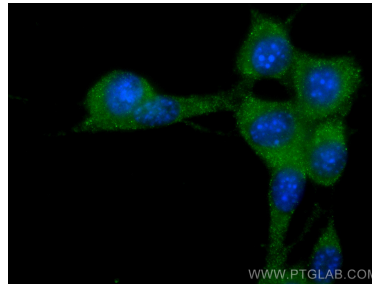
Immunohistochemical analysis of paraffin-embedded rat brain tissue slide using 82559-1-RR (Stathmin 1 antibody) at dilution of 1:2000 (under 40x lens). Heat mediated antigen retrieval with Tris-EDTA buffer (pH 9.0).



Immunohistochemical analysis of paraffin-embedded rat brain tissue slide using 82559-1-RR (Stathmin 1 antibody) at dilution of 1:2000 (under 10x lens). Heat mediated antigen retrieval with Tris-EDTA buffer (pH 9.0).



Immunofluorescent analysis of (-20°C Methanol) fixed HeLa cells using Stathmin 1 antibody (82559-1-RR, Clone: 2H6) at dilution of 1:1000 and CoraLite®488-Conjugated AffiniPure Goat Anti-Rabbit IgG(H+L).



Immunofluorescent analysis of (-20°C Methanol) fixed NIH/3T3 cells using Stathmin 1 antibody (82559-1-RR, Clone: 2H6) at dilution of 1:1000 and CoraLite®488-Conjugated AffiniPure Goat Anti-Rabbit IgG(H+L).