

À des fins de recherche uniquement

# Anticorps Recombinant de lapin anti-P21



Numéro de catalogue: 82669-2-RR

## Informations de base

Numéro de catalogue: 82669-2-RR	Numéro d'acquisition GenBank: BC000275	Méthode de purification: Purification par protéine A
Taille: 100ul , Concentration: 1000 µg/ml by Nanodrop;	Identification du gène (NCBI): 1026	CloneNo.: 3N14
Hôte: Lapin	Nom complet: cyclin-dependent kinase inhibitor 1A (p21, Cip1)	Dilutions recommandées: WB 1:5000-1:20000 IF 1:1000-1:4000
Isotype: IgG	MW calculé 21 kDa	
Immunogen Catalog Number: AG0368	MW observés: 21 kDa	

## Applications

### Applications testées:

IF, WB, ELISA

### Spécificité de l'espèce:

Humain, souris

### Contrôles positifs:

WB : cellules HeLa, cellules MCF-7, cellules MG U-87,  
cellules NIH/3T3

IF : cellules MCF-7,

## Informations générales

CDKN1A (p21, CIP1, WAF1) is a cyclin-dependent kinase inhibitor. CDKN1A binds to and inhibits the activity of cyclin-CDK2 or -CDK4 complexes, and thus functions as a regulator of cell cycle progression at the G1 phase. The expression of CDKN1A is induced by wild-type but not mutant p53 protein, through which CDKN1A mediates the p53-dependent cell cycle G1 phase arrest in response to a variety of stress stimuli. CDKN1A can interact with proliferating cell nuclear antigen (PCNA), and plays a regulatory role in S phase DNA replication and DNA damage repair. CDKN1A was reported to be specifically cleaved by CASP3-like caspases, which thus leads to a dramatic activation of CDK2, and may be instrumental in the execution of apoptosis following caspase activation. Two alternatively spliced variants, which encode an identical protein, have been reported.

## Stockage

### Stockage:

Stocker à -20°C. Stable pendant un an après l'expédition.

### Tampon de stockage:

PBS avec azoture de sodium à 0,02 % et glycérol à 50 % pH 7,3

L'aliquotage n'est pas nécessaire pour le stockage à -20C

\*\*\* Les 20ul contiennent 0,1% de BSA.

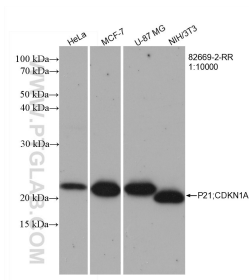
For technical support and original validation data for this product please contact:

T: 1 (888) 4PTGLAB (1-888-478-4522) (toll free  
in USA), or 1(312) 455-8498 (outside USA)

E: [proteintech@ptglab.com](mailto:proteintech@ptglab.com)  
W: [ptglab.com](http://ptglab.com)

This product is exclusively available under Proteintech Group brand and is not available to purchase from any other manufacturer.

## Données de validation sélectionnées



Various lysates were subjected to SDS PAGE followed by western blot with 82669-2-RR (P21;CDKN1A antibody) at dilution of 1:10000 incubated at room temperature for 1.5 hours.



Immunofluorescent analysis of (4% PFA) fixed MCF-7 cells using P21 antibody (82669-2-RR, Clone: 3N14 ) at dilution of 1:2000 and CoraLite® 488-Conjugated AffiniPure Goat Anti-Rabbit IgG(H+L), CL594-Phalloidin (red).