

À des fins de recherche uniquement

Anticorps Recombinant de lapin anti-MX1



Numéro de catalogue: 82677-1-RR

Informations de base

Numéro de catalogue: 82677-1-RR	Numéro d'acquisition GenBank: BC032602	Méthode de purification: Purification par protéine A
Taille: 100ul , Concentration: 1000 µg/ml by Nanodrop;	Identification du gène (NCBI): 4599	CloneNo.: 2L19
Hôte: Lapin	Nom complet: Myxovirus resistance protein 1	Dilutions recommandées: WB 1:5000-1:50000
Isotype: IgG	MW calculé 662 aa, 76 kDa	
Immunogen Catalog Number: AG4692	MW observés: 75 kDa	

Applications

Applications testées:
WB, ELISA
Spécificité de l'espèce:
Humain

Contrôles positifs:

WB : IFN alpha treated A549 cells, IFN alpha treated HepG2 cells

Informations générales

Mx1 (also known as MxA) is a GTPase that belongs to the Mx family of proteins, which are ubiquitous in eukaryotes and involved in the immune response to viral infections. The human Mx1 is localized in the cytoplasm interfering with the translation of viral proteins, whereas the mouse Mx1 accumulates in the nucleus and inhibits the primary transcription of viral RNA. Mx1 expression is induced by treatment with α/β IFN.

Stockage

Stockage:
Stocker à -20°C. Stable pendant un an après l'expédition.
Tampon de stockage:
PBS avec azoture de sodium à 0,02 % et glycérol à 50 % pH 7,3
L'aliquotage n'est pas nécessaire pour le stockage à -20C

*** Les 20ul contiennent 0,1% de BSA.

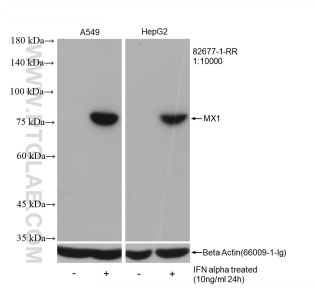
For technical support and original validation data for this product please contact:

T: 1 (888) 4PTGLAB (1-888-478-4522) (toll free
in USA), or 1(312) 455-8498 (outside USA)

E: proteintech@ptglab.com
W: ptglab.com

This product is exclusively available under Proteintech Group brand and is not available to purchase from any other manufacturer.

Données de validation sélectionnées



Untreated and IFN alpha treated A549 cells, untreated and IFN alpha treated HepG2 cells were subjected to SDS PAGE followed by western blot with 82677-1-RR (MX1 antibody) at dilution of 1:10000 incubated at room temperature for 1.5 hours.