

À des fins de recherche uniquement

Anticorps Recombinant de lapin anti-MCL1



Numéro de catalogue: 82695-2-RR

Informations de base

Numéro de catalogue: 82695-2-RR	Numéro d'acquisition GenBank: BC107735	Méthode de purification: Purification par protéine A
Taille: 100ul , Concentration: 1000 µg/ml by Nanodrop;	Identification du gène (NCBI): 4170	CloneNo.: 1C7
Hôte: Lapin	Nom complet: myeloid cell leukemia sequence 1 (BCL2-related)	Dilutions recommandées: WB 1:2000-1:10000
Isotype: IgG	MW calculé 350 aa, 37 kDa	
Immunogen Catalog Number: AG10397	MW observés: 40 kDa	

Applications

Applications testées:
WB, ELISA

Spécificité de l'espèce:
Humain, rat, souris

Contrôles positifs:

WB : cellules HeLa, cellules C2C12, cellules C6, cellules HEK-293, cellules Jurkat, cellules MCF-7, cellules Raji

Informations générales

MCL-1 is an anti-apoptotic member of the Bcl-2 family originally isolated from the ML-1 human myeloid leukemia cell line. Similar to BCL2 and BCL2L1, MCL1 can interact with BAX and/or BAK1 to inhibit mitochondria-mediated apoptosis. Mcl-1 is critical for the proliferation and survival of myeloma cells in vitro, and overexpression of Mcl-1 protein in myeloma cells is associated with relapse and short event-free survival in multiple myeloma patients. Recent studies show that MCL-1 is upregulated in numerous haematological and solid tumour malignancies. Therefore, MCL-1 has been suggested as a potential new therapeutic target. MCL-1 can be alternatively spliced into a long form (MCL-1L, 40 kDa) or a short form (MCL-1S, 30 kDa). (PMID: 15467463, PMID: 15147382)

Stockage

Stockage:
Stocker à -20°C. Stable pendant un an après l'expédition.

Tampon de stockage:
PBS avec azoture de sodium à 0,02 % et glycérol à 50 % pH 7,3

L'aliquotage n'est pas nécessaire pour le stockage à -20C

***** Les 20ul contiennent 0,1% de BSA**

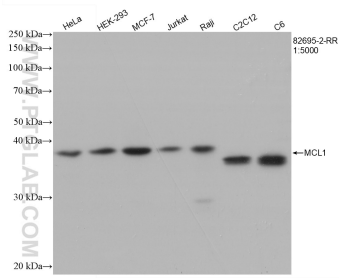
For technical support and original validation data for this product please contact:

T: 1 (888) 4PTGLAB (1-888-478-4522) (toll free
in USA), or 1(312) 455-8498 (outside USA)

E: proteintech@ptglab.com
W: ptglab.com

This product is exclusively available under Proteintech Group brand and is not available to purchase from any other manufacturer.

Données de validation sélectionnées



Various lysates were subjected to SDS PAGE followed by western blot with 82695-2-RR (MCL1 antibody) at dilution of 1:5000 incubated at room temperature for 1.5 hours.