

À des fins de recherche uniquement

Anticorps Recombinant de lapin anti-CHCHD2



Numéro de catalogue: 82702-1-RR

Informations de base

Numéro de catalogue: 82702-1-RR	Numéro d'acquisition GenBank: BC003079	Méthode de purification: Purification par protéine A
Taille: 100ul , Concentration: 500 µg/ml by Nanodrop;	Identification du gène (NCBI): 51142	CloneNo.: 4A12
Hôte: Lapin	Nom complet: coiled-coil-helix-coiled-coil-helix domain containing 2	Dilutions recommandées: WB 1:2000-1:10000 IF 1:250-1:1000
Isotype: IgG	MW calculé 151 aa, 16 kDa	
Immunogen Catalog Number: AG13752	MW observés: 16 kDa	

Applications

Applications testées:
IF, WB, ELISA

Spécificité de l'espèce:
Humain

Contrôles positifs:

WB : cellules HEK-293, cellules HSC-T6, cellules Jurkat,
cellules K-562, cellules LNCaP

IF : cellules HepG2,

Informations générales

CHCHD2 is a widely expressed 16.7-kDa mitochondrion-localized protein. CHCHD2 contains a C-terminal CHCH (coiled-coil helix coiled-coil helix) domain. Mutations in CHCHD2 gene have been reported in autosomal dominant Parkinson's disease (ADPD). CHCHD2 is a bi-organellar mediator of oxidative phosphorylation, playing crucial roles in regulating electron flow in the mitochondrial electron transport chain and acting as a nuclear transcription factor for a cytochrome c oxidase subunit (COX4I2) and itself in response to hypoxic stress. CHCHD2 also regulates cell migration and differentiation, mitochondrial cristae structure, and apoptosis (PMID: 33967741).

Stockage

Stockage:
Stocker à -20°C. Stable pendant un an après l'expédition.

Tampon de stockage:
PBS avec azoture de sodium à 0,02 % et glycérol à 50 % pH 7,3

L'aliquotage n'est pas nécessaire pour le stockage à -20C

*** Les 20ul contiennent 0,1% de BSA.

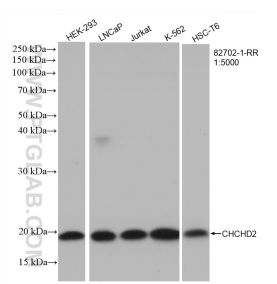
For technical support and original validation data for this product please contact:

T: 1 (888) 4PTGLAB (1-888-478-4522) (toll free
in USA), or 1(312) 455-8498 (outside USA)

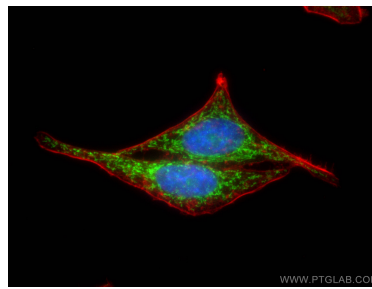
E: proteintech@ptglab.com
W: ptglab.com

This product is exclusively available under Proteintech Group brand and is not available to purchase from any other manufacturer.

Données de validation sélectionnées



Various lysates were subjected to SDS PAGE followed by western blot with 82702-1-RR (CHCHD2 antibody) at dilution of 1:5000 incubated at room temperature for 1.5 hours.



Immunofluorescent analysis of (4% PFA) fixed HepG2 cells using CHCHD2 antibody (82702-1-RR, Clone: 4A12) at dilution of 1:500 and CoraLite®488-Conjugated AffiniPure Goat Anti-Rabbit IgG(H+L), CL594-Phalloidin (red).