

À des fins de recherche uniquement

# Anticorps Monoclonal anti-CD11b

Numéro de catalogue: AB-65116



## Informations de base

Numéro de catalogue:

AB-65116

Taille:

100 tests, 5 µl/test

Hôte:

Mouse

Isotype:

IgG1, kappa

Numéro d'acquisition GenBank:

BC096346

Identification du gène (NCBI):

3684

Nom complet:

integrin, alpha M (complement component 3 receptor 3 subunit)

MW calculé

1152 aa, 127 kDa

Méthode de purification:

Purification par affinité

CloneNo.:

ICRF44

Excitation/Emission maxima wavelengths:

404 nm / 458 nm

## Applications

Applications testées:

FC

Spécificité de l'espèce:

Humain

## Informations générales

Integrins are cell adhesion receptors that are heterodimers composed of non-covalently associated  $\alpha$  and  $\beta$  subunits (PMID: 9779984). CD11b, also known as Integrin alpha M or CR3A, belongs to the integrin alpha chain family. CD11b forms an  $\alpha/\beta$  heterodimer with CD18 (integrin  $\beta 2$ ). CD11b/CD18 is implicated in various adhesive interactions of monocytes, macrophages and granulocytes as well as in mediating the uptake of complement-coated particles and pathogens (PMID: 9558116; 20008295). CD11b/CD18 is a receptor for the complement protein fragment iC3b, and is also a receptor for fibrinogen, factor X and ICAM1 (PMID: 2971974; 15485828).

## Stockage

Stockage:

Store at 2-8°C. Avoid exposure to light. Stable for one year after shipment.

Tampon de stockage:

PBS with 0.09% sodium azide and 0.5% BSA.

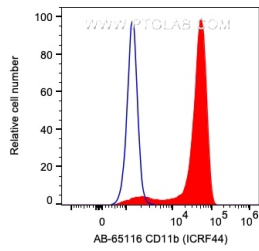
For technical support and original validation data for this product please contact:

T: 1 (888) 4PTGLAB (1-888-478-4522) (toll free in USA), or 1(312) 455-8498 (outside USA)

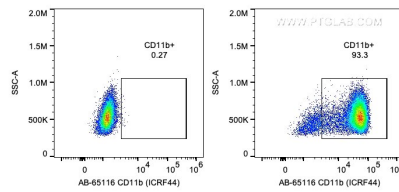
E: [proteintech@ptglab.com](mailto:proteintech@ptglab.com)  
W: [ptglab.com](http://ptglab.com)

This product is exclusively available under Proteintech Group brand and is not available to purchase from any other manufacturer.

## Données de validation sélectionnées



1X10<sup>6</sup> human PBMCs were surface stained with 5 ul Atlantic Blue™ Anti-Human CD11b (AB-65116, Clone: ICRF44). Cells were not fixed. Monocytes were gated.



1X10<sup>6</sup> human PBMCs were surface stained with 5 ul Atlantic Blue™ Anti-Human CD11b (AB-65116, Clone: ICRF44). Cells were not fixed. Monocytes were gated.