

À des fins de recherche uniquement

# Anticorps Monoclonal anti-CD226

Numéro de catalogue: **AB-65247**



## Informations de base

Numéro de catalogue: AB-65247	Numéro d'acquisition GenBank: BC074787	Méthode de purification: N/A
Taille: 100tests , 5 µl/test	Identification du gène (NCBI): 10666	CloneNo.: 11A8
Hôte: Mouse	Nom complet: CD226 molecule	Excitation/Emission maxima wavelengths: 404 nm / 458 nm
Isotype: IgG1, kappa	MW calculé 336 aa, 39 kDa	

## Applications

Applications testées:  
FC  
Spécificité de l'espèce:  
Humain

## Informations générales

CD226 (DNAM-1) is a ~65 kDa glycoprotein expressed on the surface of NK cells, platelets, monocytes and a subset of T cells. It is a member of the Ig-superfamily containing 2 Ig-like domains of the V-set. CD226 mediates cellular adhesion of platelets and megakaryocytic cells to vascular endothelial cells. The protein also plays a role in megakaryocytic cell maturation. Interactions of CD226 and its ligands, CD155 and CD112, induce NK and T cell-mediated cytotoxicity and cytokine secretion (PMID: 15039383).

## Stockage

Stockage:  
Store at 2-8°C. Avoid exposure to light. Stable for one year after shipment.  
Tampon de stockage:  
PBS with 0.09% sodium azide and 0.5% BSA.

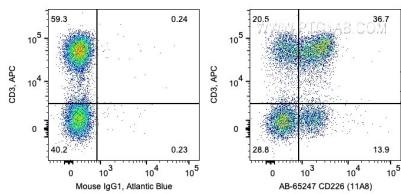
For technical support and original validation data for this product please contact:

T: 1 (888) 4PTGLAB (1-888-478-4522) (toll free  
in USA), or 1(312) 455-8498 (outside USA)

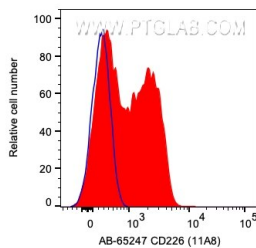
E: [proteintech@ptglab.com](mailto:proteintech@ptglab.com)  
W: [ptglab.com](http://ptglab.com)

**This product is exclusively available under Proteintech Group brand and is not available to purchase from any other manufacturer.**

## Données de validation sélectionnées



1X10<sup>6</sup> human PBMCs were surface co-stained with APC Anti-Human CD3 and 5 ul Atlantic Blue™ Anti-Human CD226 (AB-65247, Clone:11A8) or Mouse IgG1 Isotype Control. Cells were not fixed. Lymphocytes were gated.



1X10<sup>6</sup> human PBMCs were surface stained with 5 ul Atlantic Blue™ Anti-Human CD226 (AB-65247, Clone:11A8) (red) or Mouse IgG1 Isotype Control. Cells were not fixed. Lymphocytes were gated.