

À des fins de recherche uniquement

# Anticorps Monoclonal anti-IgG1 Isotype Control



Numéro de catalogue: AB-66360-1

## Informations de base

Numéro de catalogue:

AB-66360-1

Taille:

100ug, Concentration: 200 µg/mL by  
Nanodrop;

Hôte:

Mouse

Isotype:

IgG1

Numéro d'acquisition GenBank:

Identification du gène (NCBI):

Nom complet:

Méthode de purification:

Purification par protéine G

CloneNo.:

1F8D3

Excitation/Emission maxima  
wavelengths:

404 nm / 458 nm

## Applications

Applications testées:

FC

Spécificité de l'espèce:

Megathura crenulata

## Informations générales

This antibody is used as the isotype control of mouse IgG1 (Kappa). It can be used as the isotype control in Flow Cytometry, Immuno-Precipitation and other experiments. The immunogen of this antibody is Keyhole Limpet Hemocyanin (KLH).

## Stockage

Stockage:

Store at 2-8°C. Avoid exposure to light. Stable for one year after shipment.

Tampon de stockage:

PBS with 0.09% sodium azide and 0.5% BSA.

**\*\*\* Les 20ul contiennent 0,1% de BSA.**

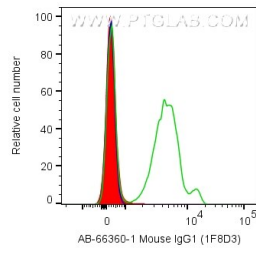
For technical support and original validation data for this product please contact:

T: 1 (888) 4PTGLAB (1-888-478-4522) (toll free  
in USA), or 1(312) 455-8498 (outside USA)

E: [proteintech@ptglab.com](mailto:proteintech@ptglab.com)  
W: [ptglab.com](http://ptglab.com)

**This product is exclusively available under Proteintech Group brand and is not available to purchase from any other manufacturer.**

## Données de validation sélectionnées



1X10<sup>6</sup> human PBMCs were surface stained with 0.2 ug Atlantic Blue™ Anti-Mouse IgG1 Isotype Control (AB-66360-1, Clone:1F8D3) (red), Atlantic Blue™ Anti-Human CD3 (green), or unstained (blue). Cells were not fixed. Lymphocytes were gated.