

À des fins de recherche uniquement

Anticorps Polyclonal de lapin anti-PKM1-specific



Numéro de catalogue: **Biotin-15821**

Informations de base

Numéro de catalogue: Biotin-15821	Numéro d'acquisition GenBank: NM_182470	Méthode de purification: Purification par affinité contre l'antigène
Taille: 100ul, Concentration: 573 µg/ml by Nanodrop;	Identification du gène (NCBI): 5315	Dilutions recommandées: IHC 1:50-1:500
Hôte: Lapin	Nom complet: PKM pyruvate kinase, muscle	
Isotype: IgG	MW calculé: 58 kDa	
	MW observés: 58 kDa	

Applications

Applications testées:
IHC

Spécificité de l'espèce:
Humain, rat, souris

Remarque-IHC: il est suggéré de démasquer l'antigène avec un tampon de TE buffer pH 9.0; (*) À défaut, 'le démasquage de l'antigène peut être 'effectué avec un tampon citrate pH 6,0.

Contrôles positifs:

IHC : tissu cérébral de souris, tissu de muscle squelettique de souris

Informations générales

PKM, also named as OIP3, PK2, PK3, PKM, p58, THBP1, CTHBP and Tumor M2-PK, belongs to the pyruvate kinase family. It is glycolytic enzyme that catalyzes the transfer of a phosphoryl group from phosphoenolpyruvate (PEP) to ADP, generating ATP. It stimulates POU5F1-mediated transcriptional activation. PKM plays a general role in caspase independent cell death of tumor cells. PKM has 2 isoforms named PKM1 and PKM2. The primary pyruvate kinase isoform before tumour development is PK-M1; however, the primary isoform from four independent tumours is PK-M2 (PMID:18337823). This antibody is conjugated with Biotin and it's specific to PKM1 isoform.

Stockage

Stockage:

Stocker à -20 °C. Éviter toute exposition à la lumière.

Tampon de stockage:

PBS with 50% Glycerol, pH 7.3.

L'aliquotage n'est pas nécessaire pour le stockage à -20C

***** Les 20ul contiennent 0,1% de BSA.**

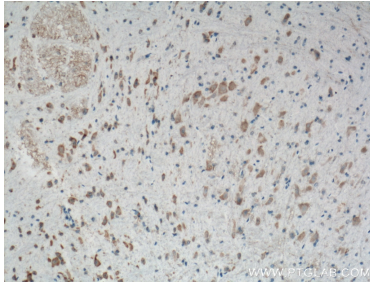
For technical support and original validation data for this product please contact:

T: 1 (888) 4PTGLAB (1-888-478-4522) (toll free in USA), or 1(312) 455-8498 (outside USA)

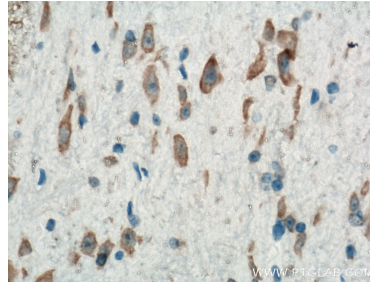
E: proteintech@ptglab.com
W: ptglab.com

This product is exclusively available under Proteintech Group brand and is not available to purchase from any other manufacturer.

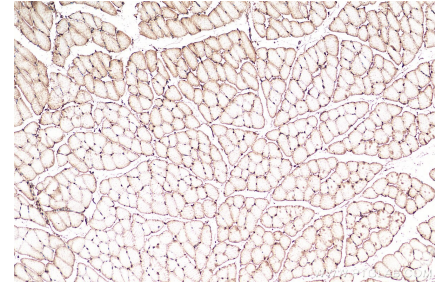
Données de validation sélectionnées



Immunohistochemical analysis of paraffin-embedded mouse brain tissue slide using Biotin-15821(PKM1-specific antibody) at dilution of 1:200 (under 10x lens. Heat mediated antigen retrieval with Tris-EDTA buffer (pH 9.0).



Immunohistochemical analysis of paraffin-embedded mouse brain tissue slide using Biotin-15821(PKM1-specific antibody) at dilution of 1:200 (under 40x lens. Heat mediated antigen retrieval with Tris-EDTA buffer (pH 9.0).



Immunohistochemical analysis of paraffin-embedded mouse skeletal muscle tissue slide using Biotin-15821 (PKM1-specific antibody) at dilution of 1:200 (under 10x lens). Heat mediated antigen retrieval with Tris-EDTA buffer (pH 9.0).