

À des fins de recherche uniquement

Anticorps Monoclonal anti-Beta Actin



Numéro de catalogue: Biotin-60008

3 Publications

Informations de base

Numéro de catalogue: Biotin-60008	Numéro d'acquisition GenBank: BC002409	Méthode de purification: Précipitation de l'acide caprylique/du sulfate d'ammonium
Taille: 100ul , Concentration: 1000 µg/ml by 60 Nanodrop;	Identification du gène (NCBI): 60	CloneNo.: 7D2C10
Hôte: Mouse	Nom complet: actin, beta	Dilutions recommandées: IHC 1:50-1:500
Isotype: IgM	MW calculé: 375 aa, 42 kDa	
Immunogen Catalog Number: AG0297	MW observés: 42 kDa	

Applications

Applications testées: IHC	Contrôles positifs: IHC : tissu cardiaque de souris,
Demandes citées: WB	
Spécificité de l'espèce: Humain, plante, poisson-zèbre, porc, rat, souris	
Espèces citées: Humain, porc, rat	
Remarque-IHC: il est suggéré de démasquer l'antigène avec un tampon de TE buffer pH 9,0; (*) À défaut, le démasquage de l'antigène peut être effectué avec un tampon citrate pH 6,0.	

Informations générales

Beta actin, also named as ACTB and F-Actin, belongs to the actin family. Actins are highly conserved globular proteins that are involved in various types of cell motility and are ubiquitously expressed in all eukaryotic cells. At least six isoforms of actins are known in mammals and other vertebrates: alpha (ACTC1, cardiac muscle 1), alpha 1 (ACTA1, skeletal muscle) and 2 (ACTA2, aortic smooth muscle), beta (ACTB), gamma 1 (ACTG1) and 2 (ACTG2, enteric smooth muscle). Beta and gamma 1 are two non-muscle actin proteins. Most actins consist of 376aa, while ACTG2 (rich in muscles) has 375aa and ACTG1(found in non-muscle cells) has only 374aa. Beta actin has been widely used as the internal control in RT-PCR and Western Blotting as a 42-kDa protein. However, the 37-40 kDa cleaved fragment of beta actin can be generated during apoptosis process. This antibody can recognize all the actins.

Publications notables

Autrice	Pubmed ID	Journal	Application
Gaojian Zhang	35372814	iScience	WB
Juan Luo	37614421	Exp Ther Med	WB
Yanfei Yin	37000598	Reproduction	WB

Stockage

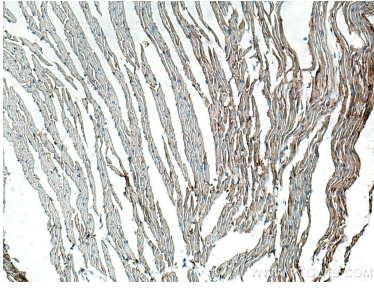
Stockage:
Stocker à -20°C. Éviter toute exposition à la lumière. Stable pendant un an après l'expédition.
Tampon de stockage:
PBS avec glycérol à 50 %, Proclin300 à 0,05 % et BSA à 0,5 %, pH 7,3.
L'aliquotage n'est pas nécessaire pour le stockage à -20C

*** Les 20ul contiennent 0,1% de BSA.

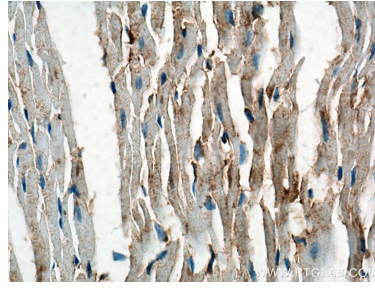
For technical support and original validation data for this product please contact:
T: 1 (888) 4PTGLAB (1-888-478-4522) (toll free in USA), or 1(312) 455-8498 (outside USA)
E: proteintech@ptglab.com
W: ptglab.com

This product is exclusively available under Proteintech Group brand and is not available to purchase from any other manufacturer.

Données de validation sélectionnées



Immunohistochemical analysis of paraffin-embedded mouse heart tissue slide using Biotin-60008 (beta Actin antibody) at dilution of 1:200 (under 10x lens). Heat mediated antigen retrieval with Tris-EDTA buffer (pH 9.0).



Immunohistochemical analysis of paraffin-embedded mouse heart tissue slide using Biotin-60008 (beta Actin antibody) at dilution of 1:200 (under 40x lens). Heat mediated antigen retrieval with Tris-EDTA buffer (pH 9.0).