

À des fins de recherche uniquement

Anticorps Monoclonal anti-CD107a / LAMP1



Numéro de catalogue: **CL405-65051**

Informations de base

| | | |
|-------------------------------------|--|---|
| Numéro de catalogue: CL405-65051 | Numéro d'acquisition GenBank: BC006345 | Méthode de purification: Purification par protéine G |
| Taille: 100tests , 5 µl/test | Identification du gène (NCBI): 3916 | CloneNo.: H4A3 |
| Hôte: Mouse | Nom complet: lysosomal-associated membrane protein 1 | Excitation/Emission maxima wavelengths: 399 nm / 422 nm |
| Isotype: IgG1 | | |

Applications

Applications testées:
FC (Intra)
Spécificité de l'espèce:
Humain

Informations générales

LAMP1 (CD107a) is a heavily glycosylated membrane protein enriched in the lysosomal membrane. LAMP1 is extensively glycosylated with asparagine-linked oligosaccharides which protect it from intracellular proteolysis (PMID: 10521503). Although LAMP1 is expressed largely in the endosome-lysosomal membrane of cells, it is also found on the plasma membrane (PMID: 16168398). Elevated LAMP1 expression at the cell surface has also been detected during platelet and granulocytic cell activation, as well as in some tumor cells (PMID: 29085473). LAMP1 functions to provide selectins with carbohydrate ligands. This protein has also been shown to be a marker of degranulation on lymphocytes such as CD8+ and NK cells and may also play a role in tumor cell differentiation and metastasis (PMID: 18835598; 29085473; 9426697).

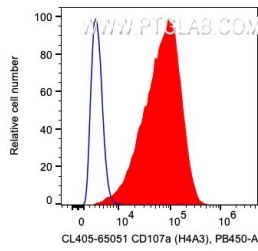
Stockage

Stockage:
Store at 2-8°C. Avoid exposure to light. Stable for one year after shipment.
Tampon de stockage:
PBS with 0.09% sodium azide and 0.5% BSA.

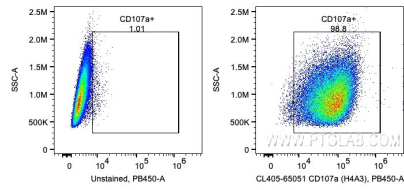
For technical support and original validation data for this product please contact:
T: 1 (888) 4PTGLAB (1-888-478-4522) (toll free in USA), or 1(312) 455-8498 (outside USA) E: proteintech@ptglab.com
W: ptglab.com

This product is exclusively available under Proteintech Group brand and is not available to purchase from any other manufacturer.

Données de validation sélectionnées



1X10⁶ HeLa cells were intracellularly stained with 5 ul CoraLite® Plus 405 Anti-Human CD107a / LAMP1 (CL405-65051, Clone:H4A3). Cells were fixed with 4% PFA and permeabilized with Flow Cytometry Perm Buffer (PF00011-C).



1X10⁶ HeLa cells were intracellularly stained with 5 ul CoraLite® Plus 405 Anti-Human CD107a / LAMP1 (CL405-65051, Clone:H4A3). Cells were fixed with 4% PFA and permeabilized with Flow Cytometry Perm Buffer (PF00011-C).