

À des fins de recherche uniquement

# Anticorps Monoclonal anti-CD107b / LAMP2



Numéro de catalogue: **CL405-65053**

## Informations de base

Numéro de catalogue:

CL405-65053

Taille:

100tests , 5 µl/test

Hôte:

Mouse

Isotype:

IgG1

Numéro d'acquisition GenBank:

BC002965

Identification du gène (NCBI):

3920

Nom complet:

lysosomal-associated membrane protein 2

MW calculé

45 kDa

Méthode de purification:

Purification par protéine G

CloneNo.:

H4B4

Excitation/Emission maxima wavelengths:

399 nm / 422 nm

## Applications

Applications testées:

FC (Intra)

Spécificité de l'espèce:

Humain

## Informations générales

LAMP2 (CD107b) is a Lysosomal membrane glycoprotein. LAMP2 is extensively glycosylated with asparagine-linked oligosaccharides which protect it from intracellular proteolysis (PMID: 10521503). Although LAMP-2 is localized primarily in the endosome-lysosomal membrane of cells, it is also found on the plasma membrane under certain circumstances, e.g., after platelet activation, during granulocytic differentiation and activation, and in some tumor cells (PMID: 12221139). LAMP is involved in lysosomal stability and autophagy (PMID: 12221139). This glycoprotein provides selectins with carbohydrate ligands. LAMP2 may play a role in tumor cell metastasis (PMID 9426697).

## Stockage

Stockage:

Store at 2-8°C. Avoid exposure to light. Stable for one year after shipment.

Tampon de stockage:

PBS with 0.09% sodium azide and 0.5% BSA.

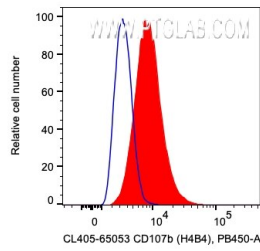
For technical support and original validation data for this product please contact:

T: 1 (888) 4PTGLAB (1-888-478-4522) (toll free in USA), or 1(312) 455-8498 (outside USA)

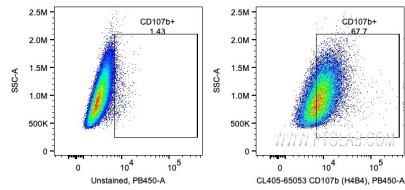
E: [proteintech@ptglab.com](mailto:proteintech@ptglab.com)  
W: [ptglab.com](http://ptglab.com)

**This product is exclusively available under Proteintech Group brand and is not available to purchase from any other manufacturer.**

## Données de validation sélectionnées



1X10<sup>6</sup> HeLa cells were intracellularly stained with 5 ul CoraLite® Plus 405 Anti-Human CD107b / LAMP2 (CL405-65053, Clone:H4B4). Cells were fixed with 4% PFA and permeabilized with Flow Cytometry Perm Buffer (PF00011-C).



1X10<sup>6</sup> HeLa cells were intracellularly stained with 5 ul CoraLite® Plus 405 Anti-Human CD107b / LAMP2 (CL405-65053, Clone:H4B4). Cells were fixed with 4% PFA and permeabilized with Flow Cytometry Perm Buffer (PF00011-C).