

À des fins de recherche uniquement

Anticorps Monoclonal anti-Ly-6G/Ly-6C (Gr-1)



Numéro de catalogue: **CL405-65140**

Informations de base

Numéro de catalogue:

CL405-65140

Taille:

100ug, 0.5 mg/ml

Hôte:

Rat

Isotype:

IgG2b, kappa

Numéro d'acquisition GenBank:

X70920

Identification du gène (NCBI):

546644

Nom complet:

Lymphocyte antigen 6 complex, locus

G

Méthode de purification:

Purification par affinité

CloneNo.:

RB6-8C5

Excitation/Emission maxima

wavelengths:

399 nm / 422 nm

Applications

Applications testées:

FC

Spécificité de l'espèce:

souris

Informations générales

Ly-6G (lymphocyte antigen 6 complex, locus G), also known as Gr-1, is a 21-25 kDa, glycosylphosphatidylinositol-anchored protein expressed on myeloid lineage cells in mouse bone marrow (PMID: 8360469). The expression of Ly-6G increases on neutrophils as they differentiate from immature cells in the bone marrow to mature cells in the blood and spleen (PMID: 8890901). Antibodies targeting Ly6G (RB6-8C5 or 1A8) are commonly used in studies aimed at identifying the role of neutrophils (PMID: 23543767). The RB6-8C5 mAb has been reported to cross-react with Ly-6C on cells expressing Ly-6C (PMID: 8360469).

Stockage

Stockage:

Store at 2-8°C. Avoid exposure to light. Stable for one year after shipment.

Tampon de stockage:

PBS with 0.09% sodium azide.

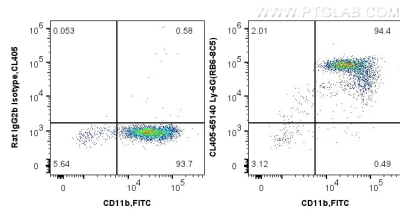
For technical support and original validation data for this product please contact:

T: 1 (888) 4PTGLAB (1-888-478-4522) (toll free in USA), or 1(312) 455-8498 (outside USA)

E: proteintech@ptglab.com
W: ptglab.com

This product is exclusively available under Proteintech Group brand and is not available to purchase from any other manufacturer.

Données de validation sélectionnées



1X10⁶ mouse bone marrow cells were surface co-stained with FITC Anti-Mouse CD11b and 0.5 ug CoraLite® Plus 405 Anti-Mouse Ly-6G/Ly-6C (Gr-1) (CL405-65140, Clone: RB6-8C5) or 0.5 ug Control Antibody. Cells were not fixed.