

À des fins de recherche uniquement

Anticorps Monoclonal anti-HLA-DR

Numéro de catalogue: CL405-65218



Informations de base

Numéro de catalogue:
CL405-65218

Taille:
100 tests, 5 µl/test

Hôte:
Mouse

Isotype:
IgG2a, kappa

Numéro d'acquisition GenBank:
BC032350

Identification du gène (NCBI):
3122

Nom complet:
major histocompatibility complex,
class II, DR alpha

MW calculé
254 aa, 29 kDa

Méthode de purification:
Purification par protéine A

CloneNo.:
L243

Excitation/Emission maxima
wavelengths:
399 nm / 422 nm

Applications

Applications testées:
FC

Spécificité de l'espèce:
Humain

Informations générales

Stockage

Stockage:
Store at 2-8°C. Avoid exposure to light. Stable for one year after shipment.
Tampon de stockage:
PBS with 0.09% sodium azide and 0.5% BSA.

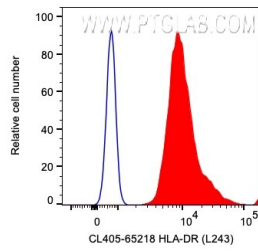
For technical support and original validation data for this product please contact:

T: 1 (888) 4PTGLAB (1-888-478-4522) (toll free
in USA), or 1(312) 455-8498 (outside USA)

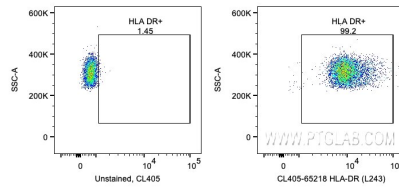
E: proteintech@ptglab.com
W: ptglab.com

This product is exclusively available under Proteintech Group brand and is not available to purchase from any other manufacturer.

Données de validation sélectionnées



1X10⁶ human PBMCs were surface stained with 5 ul CoraLite® Plus 405 Anti-Human HLA-DR (CL405-65218, Clone:L243) or unstained. Cells were not fixed. Monocytes were gated.



1X10⁶ human PBMCs were surface stained with 5 ul CoraLite® Plus 405 Anti-Human HLA-DR (CL405-65218, Clone:L243) or unstained. Cells were not fixed. Monocytes were gated.