

À des fins de recherche uniquement

Anticorps Monoclonal anti-CD226

Numéro de catalogue: **CL405-65247**



Informations de base

Numéro de catalogue:

CL405-65247

Taille:

100tests, 5 ul/test

Hôte:

Mouse

Isotype:

IgG1, kappa

Numéro d'acquisition GenBank:

BC074787

Identification du gène (NCBI):

10666

Nom complet:

CD226 molecule

MW calculé

336 aa, 39 kDa

Méthode de purification:

Purification par affinité

CloneNo.:

11A8

Excitation/Emission maxima
wavelengths:

399 nm / 422 nm

Applications

Applications testées:

FC

Spécificité de l'espèce:

Humain

Informations générales

CD226 (DNAM-1) is a ~65 kDa glycoprotein expressed on the surface of NK cells, platelets, monocytes and a subset of T cells. It is a member of the Ig-superfamily containing 2 Ig-like domains of the V-set. CD226 mediates cellular adhesion of platelets and megakaryocytic cells to vascular endothelial cells. The protein also plays a role in megakaryocytic cell maturation. Interactions of CD226 and its ligands, CD155 and CD112, induce NK and T cell-mediated cytotoxicity and cytokine secretion (PMID: 15039383).

Stockage

Stockage:

Store at 2-8°C. Avoid exposure to light. Stable for one year after shipment.

Tampon de stockage:

PBS with 0.09% sodium azide and 0.5% BSA.

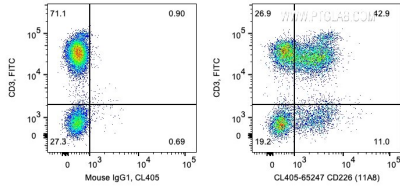
For technical support and original validation data for this product please contact:

T: 1 (888) 4PTGLAB (1-888-478-4522) (toll free
in USA), or 1(312) 455-8498 (outside USA)

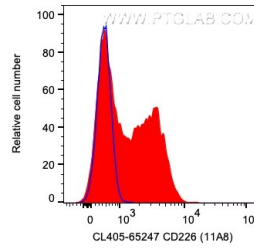
E: proteintech@ptglab.com
W: ptglab.com

This product is exclusively available under Proteintech Group brand and is not available to purchase from any other manufacturer.

Données de validation sélectionnées



1X10⁶ human PBMCs were surface co-stained with FITC Anti-Human CD3 and 5 ul CoraLite® Plus 405 Anti-Human CD226 (CL405-65247, Clone: 11A8) or Mouse IgG1 Isotype Control. Cells were not fixed. Lymphocytes were gated.



1X10⁶ human PBMCs were surface stained with 5 ul CoraLite® Plus 405 Anti-Human CD226 (CL405-65247, Clone: 11A8) or Mouse IgG1 Isotype Control. Cells were not fixed. Lymphocytes were gated.