

À des fins de recherche uniquement

# Anticorps Polyclonal de lapin anti-MEF2C



Numéro de catalogue: **CL488-10056**

Phare

## Informations de base

<b>Numéro de catalogue:</b> CL488-10056	<b>Numéro d'acquisition GenBank:</b> BC156603	<b>Méthode de purification:</b> Purification par affinité contre l'antigène
<b>Taille:</b> 100ul, Concentration: 1000 µg/ml by Nanodrop;	<b>Identification du gène (NCBI):</b> 4208	<b>Dilutions recommandées:</b> IF 1:50-1:500
<b>Hôte:</b> Lapin	<b>Nom complet:</b> myocyte enhancer factor 2C	<b>Excitation/Emission maxima wavelengths:</b> 493 nm / 522 nm
<b>Isotype:</b> IgG	<b>MW calculé:</b> 51 kDa	
<b>Immunogen Catalog Number:</b> AG0020	<b>MW observés:</b> 52 kDa, 60 kDa	

## Applications

<b>Applications testées:</b> IF	<b>Contrôles positifs:</b> IF : cellules HepG2,
<b>Spécificité de l'espèce:</b> Humain, rat, souris	

## Informations générales

MEF2C belongs to the MEF2 family. It is a transcription activator which binds specifically to the MEF2 element present in the regulatory regions of many muscle-specific genes. MEF2C controls cardiac morphogenesis and myogenesis, and is also involved in vascular development[PMID: 20221419]. It plays an essential role in hippocampal-dependent learning and memory by suppressing the number of excitatory synapses and thus regulating basal and evoked synaptic transmission[PMID:18599438]. It is crucial for normal neuronal development, distribution, and electrical activity in the neocortex and is necessary for proper development of megakaryocytes and platelets and for bone marrow B lymphopoiesis[PMID: 21666133]. This protein is required for B-cell survival and proliferation in response to BCR stimulation, efficient IgG1 antibody responses to T-cell-dependent antigens and for normal induction of germinal center B cells. It may also be involved in neurogenesis and in the development of cortical architecture. MEF2C exists some isoforms with MV 50-52 kDa, 47 kDa, and 45 kDa, but modified MEF2C is about 55-60 kDa.

## Stockage

**Stockage:**  
Stocker à -20 °C. Éviter toute exposition à la lumière. Stable pendant un an après l'expédition.  
**Tampon de stockage:**  
PBS avec glycérol à 50 %, Proclin300 à 0,05 % et BSA à 0,5 %, pH 7,3.  
L'aliquotage n'est pas nécessaire pour le stockage à -20C

**\*\*\* Les 20ul contiennent 0,1% de BSA.**

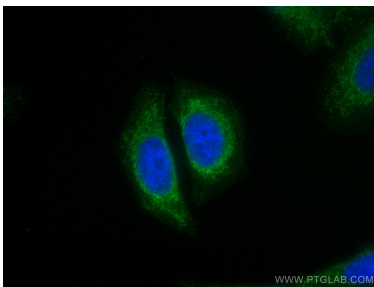
For technical support and original validation data for this product please contact:

T: 1 (888) 4PTGLAB (1-888-478-4522) (toll free in USA), or 1(312) 455-8498 (outside USA)

E: [proteintech@ptglab.com](mailto:proteintech@ptglab.com)  
W: [ptglab.com](http://ptglab.com)

**This product is exclusively available under Proteintech Group brand and is not available to purchase from any other manufacturer.**

## Données de validation sélectionnées



Immunofluorescent analysis of (4% PFA) fixed HepG2 cells using Coralite® Plus 488 MEF2C antibody (CL488-10056) at dilution of 1:200.