

À des fins de recherche uniquement

Anticorps Polyclonal de lapin anti-NDE1



Numéro de catalogue: **CL488-10233**

Phare

Informations de base

Numéro de catalogue: CL488-10233	Numéro d'acquisition GenBank: BC001421	Méthode de purification: Purification par affinité contre l'antigène
Taille: 100ul , Concentration: 1000 µg/ml by Nanodrop;	Identification du gène (NCBI): 54820	Dilutions recommandées: IF 1:50-1:500
Hôte: Lapin	Nom complet: nudE nuclear distribution gene E homolog 1 (A. nidulans)	Excitation/Emission maxima wavelengths: 493 nm / 522 nm
Isotype: IgG	MW calculé: 335 aa, 38 kDa	
Immunogen Catalog Number: AG0336	MW observés: 40 kDa	

Applications

Applications testées: IF	Contrôles positifs: IF : tissu de cancer du sein humain,
Spécificité de l'espèce: Humain, rat, souris	

Informations générales

NDE1 (NUDE /NUDE1) is a LIS1-interacting protein. A signaling pathway containing NDE1, LIS1, and cytoplasmic dynein is conserved for eukaryotic nuclear migration and has profound impact on neuronal migration during development of the central nervous system. LIS1 and dynein have been shown to be involved in mitosis and NDE1 participates in a subset of dynein function in M phase. NDE1 is specifically phosphorylated in M phase in its serine/threonine phosphorylation motifs, probably by Cdc2 and also Erk1 and Erk2. A fraction of NDE1 binds to centrosomes strongly in interphase and is localized to mitotic spindles in early M phase. Phosphorylation of NDE1 also regulates the cell-cycle-dependent distribution, possibly by increasing its dissociation rate at the microtubule-organizing center. This antibody is a rabbit polyclonal antibody raised against a peptide mapping within human NDE1.

Stockage

Stockage:
Stocker à -20 °C. Éviter toute exposition à la lumière.
Tampon de stockage:
PBS avec glycérol à 50 %, Proclin300 à 0,05 % et BSA à 0,5 %, pH 7,3.
L'aliquotage n'est pas nécessaire pour le stockage à -20C

***** Les 20ul contiennent 0,1% de BSA.**

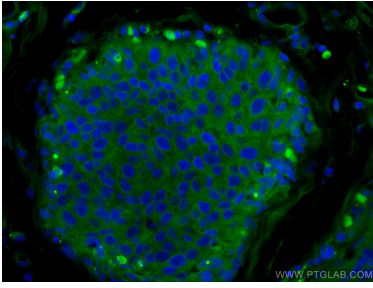
For technical support and original validation data for this product please contact:

T: 1 (888) 4PTGLAB (1-888-478-4522) (toll free in USA), or 1(312) 455-8498 (outside USA)

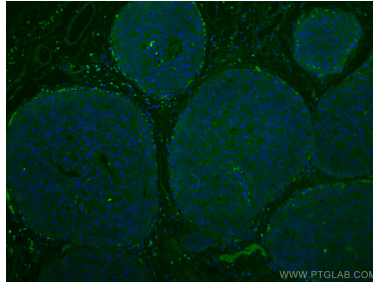
E: proteintech@ptglab.com
W: ptglab.com

This product is exclusively available under Proteintech Group brand and is not available to purchase from any other manufacturer.

Données de validation sélectionnées



Immunofluorescent analysis of (4% PFA) fixed human breast cancer tissue using CoraLite® Plus 488 NDE1 antibody (CL488-10233) at dilution of 1:200.



Immunofluorescent analysis of (4% PFA) fixed human breast cancer tissue using CoraLite® Plus 488 NDE1 antibody (CL488-10233) at dilution of 1:200.