

À des fins de recherche uniquement

# Anticorps Polyclonal de lapin anti-S100A11



Numéro de catalogue: **CL488-10237** **Phare**

## Informations de base

<b>Numéro de catalogue:</b> CL488-10237	<b>Numéro d'acquisition GenBank:</b> BC001410	<b>Méthode de purification:</b> Purification par affinité contre l'antigène
<b>Taille:</b> 100ul , Concentration: 1000 µg/ml by Nanodrop;	<b>Identification du gène (NCBI):</b> 6282	<b>Dilutions recommandées:</b> IF 1:50-1:500
<b>Hôte:</b> Lapin	<b>Nom complet:</b> S100 calcium binding protein A11	<b>Excitation/Emission maxima wavelengths:</b> 493 nm / 522 nm
<b>Isotype:</b> IgG	<b>MW calculé</b> 105 aa, 12 kDa	
<b>Immunogen Catalog Number:</b> AG0343		

## Applications

<b>Applications testées:</b> FC (Intra), IF	<b>Contrôles positifs:</b> IF : cellules PC-3,
<b>Spécificité de l'espèce:</b> Humain, rat, souris	

## Informations générales

S100A11 (also known as S100C or calziggarin), is a member of the S100 family of proteins containing 2 EF-hand calcium-binding motifs (PMID: 18694925). S100 proteins are localized in the cytoplasm and/or nucleus of a wide range of cells, and involved in the regulation of a number of cellular processes such as cell cycle progression and differentiation. First discovered in 1989, S100A11 has since been proposed to have direct biological functions in an assortment of physiological processes such as endo- and exocytosis, regulation of enzyme activity, cell growth and regulation, apoptosis and inflammation (PMID: 15241500). Chromosomal rearrangements and altered expression of S100A11 have been implicated in tumor metastasis. This S100A11 antibody (10237-1-AP) has also been instrumental in investigations into S100A11's role in the development of brain tumors in tuberous sclerosis complex (TSC) patients (PMID: 20133820).

## Stockage

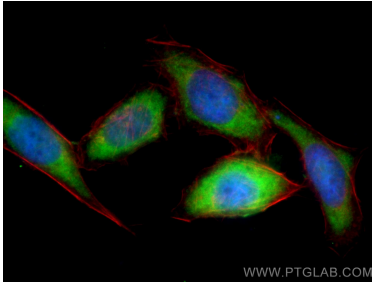
**Stockage:**  
Stocker à -20 °C. Éviter toute exposition à la lumière.  
**Tampon de stockage:**  
PBS avec glycérol à 50 %, Proclin300 à 0,05 % et BSA à 0,5 %, pH 7,3.  
L'aliquotage n'est pas nécessaire pour le stockage à -20C

**\*\*\* Les 20ul contiennent 0,1% de BSA.**

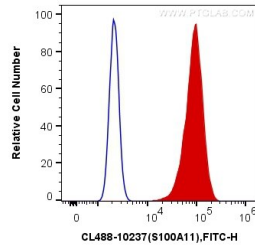
For technical support and original validation data for this product please contact:  
T: 1 (888) 4PTGLAB (1-888-478-4522) (toll free in USA), or 1(312) 455-8498 (outside USA) E: [proteintech@ptglab.com](mailto:proteintech@ptglab.com) W: [ptglab.com](http://ptglab.com)

**This product is exclusively available under Proteintech Group brand and is not available to purchase from any other manufacturer.**

## Données de validation sélectionnées



Immunofluorescent analysis of (-20°C Ethanol) fixed PC-3 cells using CoraLite® Plus 488 S100A11 antibody (CL488-10237) at dilution of 1:200. Cell nuclei were stained with DAPI (blue).



1X10<sup>6</sup> PC-3 cells were intracellularly stained with 0.4 ug CoraLite® Plus 488 Anti-Human S100A11 (CL488-10237) (red), or 0.4 ug Control Antibody. Cells were fixed and permeabilized with Transcription Factor Staining Buffer Kit (PF00011).