

À des fins de recherche uniquement

# Anticorps Polyclonal de lapin anti-S100A6



Numéro de catalogue: **CL488-10245** **Phare**

## Informations de base

Numéro de catalogue: CL488-10245	Numéro d'acquisition GenBank: BC001431	Méthode de purification: Purification par affinité contre l'antigène
Taille: 100ul, Concentration: 1000 µg/ml by Nanodrop;	Identification du gène (NCBI): 6277	Dilutions recommandées: IF 1:50-1:500
Hôte: Lapin	Nom complet: S100 calcium binding protein A6	Excitation/Emission maxima wavelengths: 493 nm / 522 nm
Isotype: IgG	MW calculé: 10 kDa	
Immunogen Catalog Number: AG0385		

## Applications

Applications testées: FC (Intra), IF	Contrôles positifs: IF : cellules MCF-7,
Spécificité de l'espèce: Humain	

## Informations générales

S100A6 is also named as calcyclin, prolactin receptor-associated protein (PRA), growth factor-inducible protein 2A9 or MLN4. It belongs to S100 family of low molecular weight, acidic, calcium-binding proteins which contain two EF-hand calcium binding sites. S100A6 may function as a calcium sensor to activate several processes in the calcium signal transduction pathway of cell growth, proliferation, secretion and exocytosis. The antibody is specific for S100A6.

## Stockage

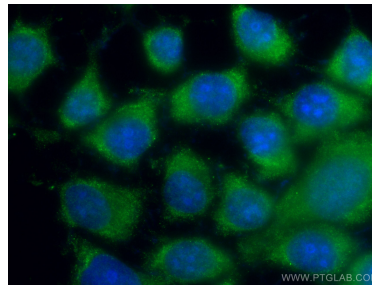
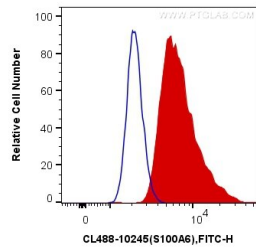
**Stockage:**  
Stocker à -20 °C. Éviter toute exposition à la lumière.  
**Tampon de stockage:**  
PBS avec glycérol à 50 %, Proclin300 à 0,05 % et BSA à 0,5 %, pH 7,3.  
L'aliquotage n'est pas nécessaire pour le stockage à -20C

**\*\*\* Les 20ul contiennent 0,1% de BSA.**

For technical support and original validation data for this product please contact:  
T: 1 (888) 4PTGLAB (1-888-478-4522) (toll free in USA), or 1(312) 455-8498 (outside USA) E: proteintech@ptglab.com W: ptglab.com

This product is exclusively available under Proteintech Group brand and is not available to purchase from any other manufacturer.

## Données de validation sélectionnées



1X10<sup>6</sup> MCF-7 cells were intracellularly stained with 0.4 ug CoraLite® Plus 488 Anti-Human S100A6 (CL488-10245) (red), or 0.4 ug Control Antibody. Cells were fixed and permeabilized with Transcription Factor Staining Buffer Kit (PF00011).

Immunofluorescent analysis of (-20°C Ethanol) fixed MCF-7 cells using CoraLite® Plus 488 S100A6 antibody (CL488-10245) at dilution of 1:200.