

À des fins de recherche uniquement

# Anticorps Polyclonal de lapin anti-MOV10



Numéro de catalogue: **CL488-10370**

Phare

## Informations de base

<b>Numéro de catalogue:</b> CL488-10370	<b>Numéro d'acquisition GenBank:</b> BC002548	<b>Méthode de purification:</b> Purification par affinité contre l'antigène
<b>Taille:</b> 100ul , Concentration: 1000 µg/ml by Nanodrop;	<b>Identification du gène (NCBI):</b> 4343	<b>Dilutions recommandées:</b> IF 1:50-1:500
<b>Hôte:</b> Lapin	<b>Nom complet:</b> Mov10, Moloney leukemia virus 10, homolog (mouse)	<b>Excitation/Emission maximum wavelengths:</b> 493 nm / 522 nm
<b>Isotype:</b> IgG	<b>MW calculé:</b> 114 kDa	
<b>Immunogen Catalog Number:</b> AG0384	<b>MW observés:</b> 110-115 kDa	

## Applications

<b>Applications testées:</b> FC (Intra), IF	<b>Contrôles positifs:</b> IF : cellules HepG2,
<b>Spécificité de l'espèce:</b> Humain, rat, souris	

## Informations générales

MOV10, also named as KIAA1631, belongs to the DNA2/NAM7 helicase family and SDE3 subfamily. It is required for RNA-mediated gene silencing by the RNA-induced silencing complex (RISC). Human MOV10 may regulate a wide range of RNA viruses and could also control the retrotransposition of endogenous retroelements in mammals (PMID:22727223). MOV10 has a broad antiretroviral activity that can target a wide range of retroviruses, and it could be actively involved in host defense against retroviral infection. MOV10 can potently inhibit HIV-1 replication at multiple stages (PMID:20215113). It is involved in the progression of telomerase-catalyzing reaction via the interaction of telomerase protein and telomere DNA.

## Stockage

**Stockage:**  
Stocker à -20 °C. Éviter toute exposition à la lumière.  
**Tampon de stockage:**  
PBS avec glycérol à 50 %, Proclin300 à 0,05 % et BSA à 0,5 %, pH 7,3.  
L'aliquotage n'est pas nécessaire pour le stockage à -20C

**\*\*\* Les 20ul contiennent 0,1% de BSA.**

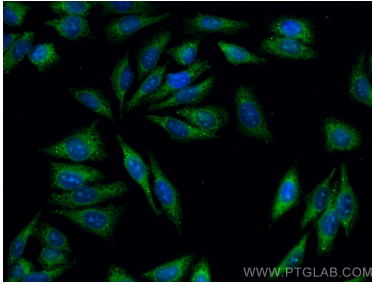
For technical support and original validation data for this product please contact:

T: 1 (888) 4PTGLAB (1-888-478-4522) (toll free in USA), or 1(312) 455-8498 (outside USA)

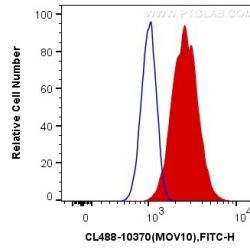
E: [proteintech@ptglab.com](mailto:proteintech@ptglab.com)  
W: [ptglab.com](http://ptglab.com)

**This product is exclusively available under Proteintech Group brand and is not available to purchase from any other manufacturer.**

## Données de validation sélectionnées



Immunofluorescent analysis of (-20°C Methanol) fixed HepG2 cells using CoraLite® Plus 488 MOV10 antibody (CL488-10370) at dilution of 1:200.



1X10<sup>6</sup> HeLa cells were intracellularly stained with 0.4 ug CoraLite® Plus 488 Anti-Human MOV10 (CL488-10370) (red), or 0.4 ug Control Antibody. Cells were fixed with 4% PFA and permeabilized with Flow Cytometry Perm Buffer (PF00011-C).