

À des fins de recherche uniquement

Anticorps Polyclonal de lapin anti-Myelin basic protein



Numéro de catalogue: CL488-10458

Informations de base

Numéro de catalogue: CL488-10458	Numéro d'acquisition GenBank: BC008749	Méthode de purification: Purification par affinité contre l'antigène
Taille: 100ul , Concentration: 1000 µg/ml by Nanodrop;	Identification du gène (NCBI): 4155	Dilutions recommandées: IF 1:50-1:500
Hôte: Lapin	Nom complet: myelin basic protein	Excitation/Emission maxima wavelengths: 493 nm / 522 nm
Isotype: IgG	MW calculé: 33 kDa	
Immunogen Catalog Number: AG0713	MW observés: 14-23 kDa	

Applications

Applications testées: IF	Contrôles positifs: IF : tissu cérébral de souris,
Spécificité de l'espèce: Humain, rat, souris	

Informations générales

MBP belongs to the myelin basic protein family. The classic group of MBP isoforms (isoform 4-isoform 14) are the most abundant protein components of the myelin membrane in the CNS. They have a role in both its formation and stabilization. The smaller isoforms might have an important role in remyelination of denuded axons in multiple sclerosis. The non-classic group of MBP isoforms (isoform 1-isoform 3/Golli-MBPs) may preferentially have a role in the early developing brain long before myelination, maybe as components of transcriptional complexes, and may also be involved in signaling pathways in T-cells and neural cells. MBP has six isoforms. Catalog#10458-1-AP is capable of recognizing multiple isoforms of MBP.

Stockage

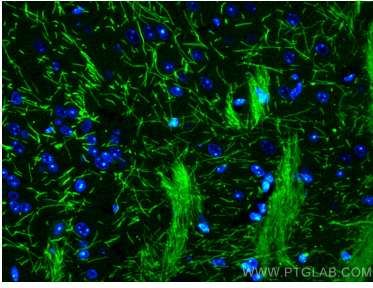
Stockage:
Stocker à -20 °C. Éviter toute exposition à la lumière. Stable pendant un an après l'expédition.
Tampon de stockage:
PBS avec glycérol à 50 %, Proclin300 à 0,05 % et BSA à 0,5 %, pH 7,3.
L'aliquotage n'est pas nécessaire pour le stockage à -20C

***** Les 20ul contiennent 0,1% de BSA.**

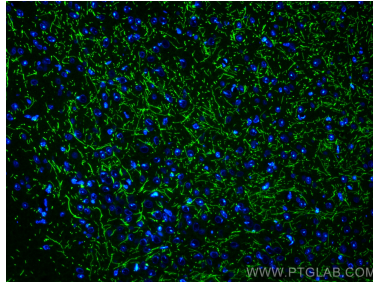
For technical support and original validation data for this product please contact:
T: 1 (888) 4PTGLAB (1-888-478-4522) (toll free in USA), or 1(312) 455-8498 (outside USA)
E: proteintech@ptglab.com
W: ptglab.com

This product is exclusively available under Proteintech Group brand and is not available to purchase from any other manufacturer.

Données de validation sélectionnées



Immunofluorescent analysis of (4% PFA) fixed mouse brain tissue using Coralite® Plus 488 Myelin basic protein antibody (CL488-10458) at dilution of 1:0.



Immunofluorescent analysis of (4% PFA) fixed mouse brain tissue using Coralite® Plus 488 Myelin basic protein antibody (CL488-10458) at dilution of 1:0.