

À des fins de recherche uniquement

# Anticorps Polyclonal de lapin anti-Chromogranin A



Numéro de catalogue: CL488-10529

## Informations de base

|  |  |   |
|--|--|---|
| Numéro de catalogue:<br>CL488-10529                      | Numéro d'acquisition GenBank:<br>BC006459                        | Méthode de purification:<br>Purification par affinité contre l'antigène |
| Taille:<br>100ul, Concentration: 1000 µg/ml by Nanodrop; | Identification du gène (NCBI):<br>1113                           | Dilutions recommandées:<br>IF 1:50-1:500                                |
| Hôte:<br>Lapin   | Nom complet:<br>chromogranin A (parathyroid secretory protein 1) | Excitation/Emission maxima wavelengths:<br>493 nm / 522 nm              |
| Isotype:<br>IgG  | MW calculé:<br>51 kDa  |   |
| Immunogen Catalog Number:<br>AG0807                      |  |   |

## Applications

|   |   |
|---|---|
| Applications testées:<br>FC (Intra), IF         | Contrôles positifs:<br>IF : tissu pancréatique de souris, |
| Spécificité de l'espèce:<br>Humain, rat, souris |   |

## Informations générales

Chromogranin A is a member of the granin family of neuroendocrine secretory proteins. It is located in secretory vesicles of neurons and endocrine cells. Chromogranin A is the precursor to several functional peptides including vasostatin, pancreastatin, catestatin and parastatin. These peptides negatively modulate the neuroendocrine function of the releasing cell (autocrine) or nearby cells (paracrine). CgA is one of the most used tumor markers in NET's (neuroendocrine tumors), and elevated CgA concentrations have been demonstrated in serum or plasma of patients with different types of these tumors.

## Stockage

**Stockage:**  
Stocker à -20 °C. Éviter toute exposition à la lumière.

**Tampon de stockage:**  
PBS avec glycérol à 50 %, Proclin300 à 0,05 % et BSA à 0,5 %, pH 7,3.  
L'aliquotage n'est pas nécessaire pour le stockage à -20C

**\*\*\* Les 20ul contiennent 0,1% de BSA.**

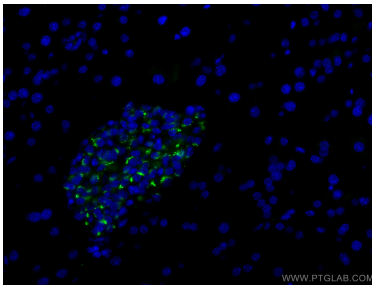
For technical support and original validation data for this product please contact:

T: 1 (888) 4PTGLAB (1-888-478-4522) (toll free in USA), or 1(312) 455-8498 (outside USA)

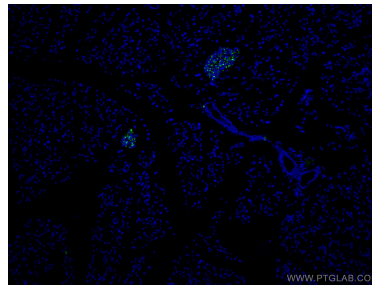
E: [proteintech@ptglab.com](mailto:proteintech@ptglab.com)  
W: [ptglab.com](http://ptglab.com)

**This product is exclusively available under Proteintech Group brand and is not available to purchase from any other manufacturer.**

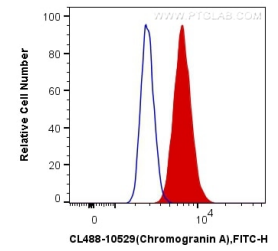
## Données de validation sélectionnées



Immunofluorescent analysis of (4% PFA) fixed mouse pancreas tissue using CoraLite® Plus 488 Chromogranin A antibody (CL488-10529) at dilution of 1:200.



Immunofluorescent analysis of (4% PFA) fixed mouse pancreas tissue using CoraLite® Plus 488 Chromogranin A antibody (CL488-10529) at dilution of 1:200.



1X10<sup>6</sup> Neuro-2a cells were intracellularly stained with 0.4 ug CoraLite® Plus 488 Anti-Human Chromogranin A (CL488-10529) (red), or 0.4 ug Control Antibody. Cells were fixed with 4% PFA and permeabilized with Flow Cytometry Perm Buffer (PF00011-C).