

À des fins de recherche uniquement

Anticorps Polyclonal de lapin anti-Cytokeratin 19



Numéro de catalogue: **CL488-10712**

Informations de base

Numéro de catalogue: CL488-10712	Numéro d'acquisition GenBank: BC007628	Méthode de purification: Purification par affinité contre l'antigène
Taille: 100ul , Concentration: 1000 µg/ml by Nanodrop;	Identification du gène (NCBI): 3880	Excitation/Emission maxima wavelengths: 493 nm / 522 nm
Hôte: Lapin	Nom complet: keratin 19	
Isotype: IgG	MW calculé 40 kDa	
Immunogen Catalog Number: AG1085		

Applications

Applications testées:
IF
Spécificité de l'espèce:
Humain, souris

Informations générales

Keratins are a large family of proteins that form the intermediate filament cytoskeleton of epithelial cells. Keratin expression is highly regulated, tissue specific, and varies according to cell-state. Type I keratins consist of acidic, low molecular weight proteins with MW ranging from 40 kDa (KRT19) to 64 kDa (KRT9). Type 2 keratins consist of basic or neutral, high molecular weight proteins with MW from 52 kDa (KRT8) to 67 kDa (KRT18). Keratin 19 is a type I cytokeratin. It is a biochemical marker of skin stem cells in vivo and in vitro.

Stockage

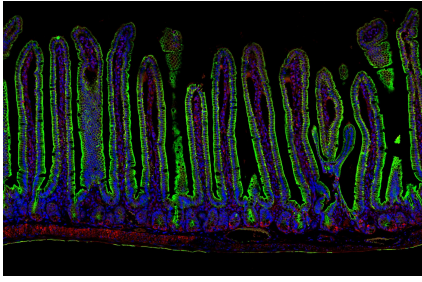
Stockage:
Stocker à -20 °C. Éviter toute exposition à la lumière. Stable pendant un an après l'expédition.
Tampon de stockage:
PBS avec glycérol à 50 %, Proclin300 à 0,05 % et BSA à 0,5 %, pH 7,3.
L'aliquotage n'est pas nécessaire pour le stockage à -20C

***** Les 20ul contiennent 0,1% de BSA.**

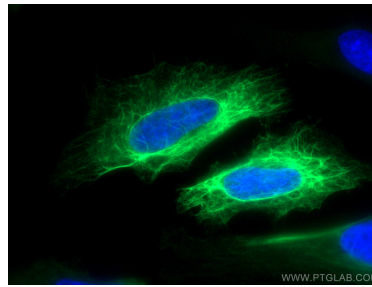
For technical support and original validation data for this product please contact:
T: 1 (888) 4PTGLAB (1-888-478-4522) (toll free in USA), or 1(312) 455-8498 (outside USA) E: proteintech@ptglab.com W: ptglab.com

This product is exclusively available under Proteintech Group brand and is not available to purchase from any other manufacturer.

Données de validation sélectionnées



Adult mouse small intestine stained for Cytokeratin 19 (green, CL488-10712) and BMI1 (red, 10832-1-AP). BMI1 stains intestinal stem cells located at the base of the villi. As these stem cells differentiate into intestinal epithelial cells, they acquire Cytokeratin 19 expression. Cytokeratin 19 was conjugated to Coralite 488. Samples were fixed in 4% PFA, embedded in paraffin, and imaged on a confocal microscope. Image credit: @Immunofluorescence on Instagram.



Immunofluorescent analysis of (-20°C Methanol) fixed HeLa cells using CoraLite® Plus 488 Cytokeratin 19 antibody (CL488-10712) at dilution of 1:200.