

À des fins de recherche uniquement

Anticorps Polyclonal de lapin anti-MECP2



Numéro de catalogue: **CL488-10861**

Phare

Informations de base

Numéro de catalogue: CL488-10861	Numéro d'acquisition GenBank: BC011612	Méthode de purification: Purifié par affinité contre l'antigène
Taille: 100ul , Concentration: 1000 µg/ml by Nanodrop;	Identification du gène (NCBI): 4204	Dilutions recommandées: IF 1:50-1:500
Hôte: Lapin	Nom complet: methyl CpG binding protein 2 (Rett syndrome)	Excitation/Emission maxima wavelengths: 493 nm / 522 nm
Isotype: IgG	MW calculé 52 kDa, 53 kDa	
Immunogen Catalog Number: AG1309	MW observés: 75 kDa	

Applications

Applications testées: FC (Intra), IF	Contrôles positifs: IF : cellules HepG2,
Spécificité de l'espèce: Humain, souris	

Informations générales

METHYL-CpG-BINDING PROTEIN 2(MECP2), is a chromatin-associated protein that can both activate and repress transcription. Mecp2 in the adult mouse is high in the brain, lung, and spleen, lower in heart and kidney. MECP2 takes part in the control of neuronal activity-dependent gene regulation, and this process may underlie the pathology of Rett syndrome, a severe developmental disorder with autistic phenotypes. As compared to wild-type monkeys, MECP2 transgenic monkeys exhibited a higher frequency of repetitive circular locomotion and increased stress responses, as measured by the threat-related anxiety and defensive test. Chromosomal protein that binds to methylated DNA. It can bind specifically to a single methyl-CpG pair. It is not influenced by sequences flanking the methyl-CpGs. Mediates transcriptional repression through interaction with histone deacetylase and the corepressor SIN3A. Two isoforms of MECP2 exist due to alternative splicing events. This antibody reacts with the MECP2 and phosphorylated MECP2 proteins. The calculated molecular weight of MECP2 is a 52 kDa, but the post-modified MECP2 protein is about 75-80 kDa (PMID: 12160743).

Stockage

Stockage:
Stocker à -20 °C. Éviter toute exposition à la lumière.
Tampon de stockage:
PBS avec glycérol à 50 %, Proclin300 à 0,05 % et BSA à 0,5 %, pH 7,3.
L'aliquotage n'est pas nécessaire pour le stockage à -20C

***** Les 20ul contiennent 0,1% de BSA.**

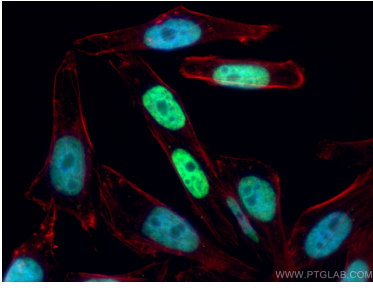
For technical support and original validation data for this product please contact:

T: 1 (888) 4PTGLAB (1-888-478-4522) (toll free in USA), or 1(312) 455-8498 (outside USA)

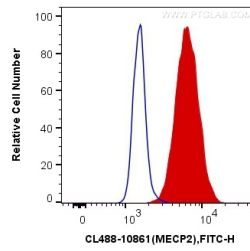
E: proteintech@ptglab.com
W: ptglab.com

This product is exclusively available under Proteintech Group brand and is not available to purchase from any other manufacturer.

Données de validation sélectionnées



Immunofluorescent analysis of (4% PFA) fixed HepG2 cells using CoraLite® Plus 488 MECP2 antibody (CL488-10861) at dilution of 1:100, CL594-Phalloidin (red).



1X10⁶ NIH/3T3 cells were intracellularly stained with 0.2 ug CoraLite® Plus 488 Anti-Human MECP2 (CL488-10861) (red), or 0.2 ug Control Antibody. Cells were fixed and permeabilized with Transcription Factor Staining Buffer Kit (PF00011).