

À des fins de recherche uniquement

# Anticorps Polyclonal de lapin anti-S100A10



Numéro de catalogue: **CL488-11250**

Phare

## Informations de base

Numéro de catalogue:	CL488-11250	Numéro d'acquisition GenBank:	BC015973	Méthode de purification:	Purification par affinité contre l'antigène
Taille:	100ul , Concentration: 1000 µg/ml by Nanodrop;	Identification du gène (NCBI):	6281	Excitation/Emission maxima wavelengths:	493 nm / 522 nm
Hôte:	Lapin	Nom complet:	S100 calcium binding protein A10		
Isotype:	IgG	MW calculé	11 kDa		
Immunogen Catalog Number:	AG1779	MW observés:	11 kDa		

## Applications

Applications testées:  
FC (Intra)

Spécificité de l'espèce:  
Humain, rat, souris

## Informations générales

S100A10, also known as p11, is a member of the S100 family of small, EF hand containing dimeric proteins. S100 proteins are localized in the cytoplasm and/or nucleus of a wide range of cells, and involved in the regulation of a number of cellular processes such as cell cycle progression and differentiation. S100A10 is present on the surface of endothelial and other cells in a heterotetrameric complex with another Ca(2+)-binding protein, annexin II. S100A10 may function in exocytosis and endocytosis.

## Stockage

Stockage:  
Stocker à -20 °C. Éviter toute exposition à la lumière. Stable pendant un an après l'expédition.

Tampon de stockage:  
PBS avec glycérol à 50 %, Proclin300 à 0,05 % et BSA à 0,5 %, pH 7,3.

L'aliquotage n'est pas nécessaire pour le stockage à -20C

**\*\*\* Les 20ul contiennent 0,1% de BSA.**

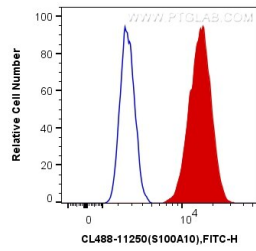
For technical support and original validation data for this product please contact:

T: 1 (888) 4PTGLAB (1-888-478-4522) (toll free in USA), or 1(312) 455-8498 (outside USA)

E: [proteintech@ptglab.com](mailto:proteintech@ptglab.com)  
W: [ptglab.com](http://ptglab.com)

This product is exclusively available under Proteintech Group brand and is not available to purchase from any other manufacturer.

## Données de validation sélectionnées



1X10<sup>6</sup> HeLa cells were intracellularly stained with 0.4 ug CoraLite® Plus 488 Anti-Human S100A10 (CL488-11250) (red), or 0.4 ug Control Antibody. Cells were fixed with 4% PFA and permeabilized with Flow Cytometry Perm Buffer (PF00011-C).