

À des fins de recherche uniquement

Anticorps Polyclonal de lapin anti-Annexin A2



Numéro de catalogue: **CL488-11256**

Phare

Informations de base

Numéro de catalogue: CL488-11256	Numéro d'acquisition GenBank: BC016774	Méthode de purification: Purification par affinité contre l'antigène
Taille: 100ul , Concentration: 1000 µg/ml by Nanodrop;	Identification du gène (NCBI): 302	Excitation/Emission maxima wavelengths: 493 nm / 522 nm
Hôte: Lapin	Nom complet: annexin A2	
Isotype: IgG	MW calculé: 339 aa, 39 kDa	
Immunogen Catalog Number: AG1777	MW observés: 35-40 kDa	

Applications

Applications testées:
FC (Intra)

Spécificité de l'espèce:
Humain, rat, souris

Informations générales

Annexin A2 (ANXA2), also named Annexin-2 or Lipocortin II, is a Ca²⁺ binding protein that is up-regulated in virally transformed cell lines and human tumors. This calcium-regulated membrane-binding protein, whose affinity for calcium is greatly enhanced by anionic phospholipids, may cross-link plasma membrane phospholipids with actin and the cytoskeleton and be involved with exocytosis. Heat-stress response may also involve Annexin-2.

Stockage

Stockage:
Stocker à -20 °C. Éviter toute exposition à la lumière.

Tampon de stockage:
PBS avec glycérol à 50 %, Proclin300 à 0,05 % et BSA à 0,5 %, pH 7,3.

L'aliquotage n'est pas nécessaire pour le stockage à -20C

***** Les 20ul contiennent 0,1% de BSA.**

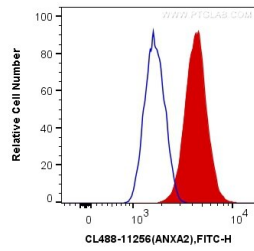
For technical support and original validation data for this product please contact:

T: 1 (888) 4PTGLAB (1-888-478-4522) (toll free in USA), or 1(312) 455-8498 (outside USA)

E: proteintech@ptglab.com
W: ptglab.com

This product is exclusively available under Proteintech Group brand and is not available to purchase from any other manufacturer.

Données de validation sélectionnées



1X10⁶ K-562 cells were intracellularly stained with 0.4 ug CoraLite® Plus 488 Anti-Human Annexin A2 (CL488-11256) (red), or 0.4 ug Control Antibody. Cells were fixed with 4% PFA and permeabilized with Flow Cytometry Perm Buffer (PF00011-C).