

À des fins de recherche uniquement

Anticorps Polyclonal de lapin anti-GOLGA2/GM130



Numéro de catalogue: **CL488-11308**

Informations de base

Numéro de catalogue: CL488-11308	Numéro d'acquisition GenBank: BC014188	Méthode de purification: Purification par affinité contre l'antigène
Taille: 100ul , Concentration: 1000 µg/ml by Nanodrop;	Identification du gène (NCBI): 2801	Dilutions recommandées: IF 1:50-1:500
Hôte: Lapin	Nom complet: golgi autoantigen, golgin subfamily a, 2	Excitation/Emission maximum wavelengths: 493 nm / 522 nm
Isotype: IgG	MW calculé 111 kDa	
Immunogen Catalog Number: AG1848		

Applications

Applications testées: FC (Intra), IF	Contrôles positifs: IF : cellules HeLa, cellules HepG2
Spécificité de l'espèce: Humain	

Informations générales

GOLGA2, also known as GM130, is a 130 kDa cis-Golgi matrix protein which is one component of the detergent and salt resistant Golgi matrix. It is a peripheral membrane protein highly bound to Golgi membrane and localized mainly at the cytoplasmic face of cis-Golgi membrane. Together with its interacting partner proteins, including p115, giantin, GRASP65, and Rab GTPase, GOLGA2/GM130 is involved in the regulation of ER-to-Golgi transport and also in the maintenance of the Golgi structure. Emerging evidence suggests that the GOLGA2/GM130 has potential roles in the control of glycosylation, cell cycle progression, and higher order cell functions such as cell polarization and directed cell migration. (PMID: 20197635)

Stockage

Stockage:
Stocker à -20 °C. Éviter toute exposition à la lumière. Stable pendant un an après l'expédition.
Tampon de stockage:
PBS avec glycérol à 50 %, Proclin300 à 0,05 % et BSA à 0,5 %, pH 7,3.
L'aliquotage n'est pas nécessaire pour le stockage à -20C

***** Les 20ul contiennent 0,1% de BSA.**

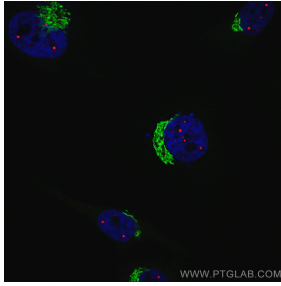
For technical support and original validation data for this product please contact:

T: 1 (888) 4PTGLAB (1-888-478-4522) (toll free in USA), or 1(312) 455-8498 (outside USA)

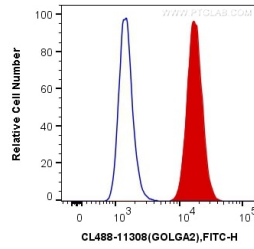
E: proteintech@ptglab.com
W: ptglab.com

This product is exclusively available under Proteintech Group brand and is not available to purchase from any other manufacturer.

Données de validation sélectionnées



Immunofluorescent analysis of (4% PFA) fixed HeLa cells using CoraLite® Plus 488 GOLGA2/GM130 antibody (CL488-11308) at dilution of 1:200, CoraLite®594 Coilin antibody (CL594-10967, red).



1X10⁶ HepG2 cells were intracellularly stained with 0.4 ug CoraLite® Plus 488 Anti-Human GOLGA2/GM130 (CL488-11308) (red), or 0.4 ug Control Antibody. Cells were fixed with 4% PFA and permeabilized with Flow Cytometry Perm Buffer (PF00011-C).