

À des fins de recherche uniquement

Anticorps Polyclonal de lapin anti-Cyclin E1



Numéro de catalogue: **CL488-11554** **Phare**

Informations de base

Numéro de catalogue: CL488-11554	Numéro d'acquisition GenBank: BC035498	Méthode de purification: Purification par affinité contre l'antigène
Taille: 100ul , Concentration: 1000 µg/ml by Nanodrop;	Identification du gène (NCBI): 898	Excitation/Emission maxima wavelengths: 493 nm / 522 nm
Hôte: Lapin	Nom complet: cyclin E1	
Isotype: IgG	MW calculé 410 aa, 47 kDa	
Immunogen Catalog Number: AG2110		

Applications

Applications testées:
FC (Intra)
Spécificité de l'espèce:
Humain, souris

Informations générales

Cyclin E1 (CCNE1) is a member of the highly conserved cyclin family, whose members are characterized by a dramatic periodicity in protein abundance through the cell cycle. CCNE1, an essential cyclin activating Cdk2, regulates the G1-S phase transition of the mammalian cell division cycle. Its timing expression plays a direct role in the initiation of DNA replication, the control of histone biosynthesis, and the centrosome cycle. CCNE1 is associated with disease progression in various malignancies and is associated clinically with poor prognosis.

Stockage

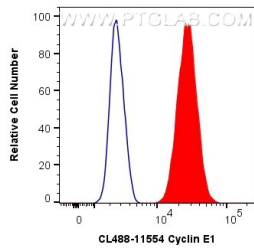
Stockage:
Stocker à -20 °C. Éviter toute exposition à la lumière. Stable pendant un an après l'expédition.
Tampon de stockage:
PBS avec glycérol à 50 %, Proclin300 à 0,05 % et BSA à 0,5 %, pH 7,3.
L'aliquotage n'est pas nécessaire pour le stockage à -20C

***** Les 20ul contiennent 0,1% de BSA.**

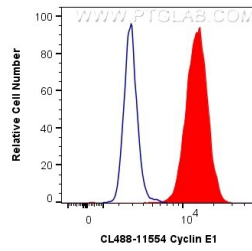
For technical support and original validation data for this product please contact:
T: 1 (888) 4PTGLAB (1-888-478-4522) (toll free in USA), or 1(312) 455-8498 (outside USA) E: proteintech@ptglab.com W: ptglab.com

This product is exclusively available under Proteintech Group brand and is not available to purchase from any other manufacturer.

Données de validation sélectionnées



1X10⁶ MCF-7 cells were intracellularly stained with 0.8 ug CoraLite® Plus 488 Anti-Human Cyclin E1 (CL488-11554) (red), or 0.8 ug Isotype Control. Cells were fixed and permeabilized with Transcription Factor Staining Buffer Kit (PF00011).



1X10⁶ HeLa cells were intracellularly stained with 0.8 ug CoraLite® Plus 488 Anti-Human Cyclin E1 (CL488-11554) (red), or 0.8 ug Isotype Control. Cells were fixed and permeabilized with Transcription Factor Staining Buffer Kit (PF00011).