

À des fins de recherche uniquement

# Anticorps Polyclonal de lapin anti-Podoplanin



Numéro de catalogue: **CL488-11629**

## Informations de base

|  |   |  |
|--|---|--|
| Numéro de catalogue:<br>CL488-11629                          | Numéro d'acquisition GenBank:<br>BC022812 | Méthode de purification:<br>Purifié par affinité contre l'antigène |
| Taille:<br>100ul , Concentration: 1000 µg/ml by<br>Nanodrop; | Identification du gène (NCBI):<br>10630   | Excitation/Emission maxima<br>wavelengths:<br>493 nm / 522 nm      |
| Hôte:<br>Lapin   | Nom complet:<br>podoplanin                |  |
| Isotype:<br>IgG  | MW calculé<br>17 kDa, 25 kDa              |  |
| Immunogen Catalog Number:<br>AG2201                          | MW observés:<br>43 kDa                    |  |

## Applications

Applications testées:  
FC (Intra)  
Spécificité de l'espèce:  
Humain

## Informations générales

Podoplanin was identified as a 43 kDa glycoprotein found in the cell membranes of glomerular epithelial cells (podocyte) (PMID: 9327748). It is a lymphatic marker because the expression of podoplanin has been detected in lymphatic but not blood vascular endothelium, and is useful as the marker of tumor-associated Lymphangiogenesis. Podoplanin has a function in developing testis, most likely at the level of cell-cell interactions among pre-meiotic germ cells and immature Sertoli cells. It may be involved in cell migration and/or actin cytoskeleton organization. When expressed in keratinocytes, PDPN induces changes in cell morphology with transfected cells showing an elongated shape, numerous membrane protrusions, major reorganization of the actin cytoskeleton, increased motility and decreased cell adhesion. It is required for normal lung cell proliferation and alveolus formation at birth. PDPN induces platelet aggregation. It does not have any effect on folic acid or amino acid transport and does not function as a water channel or as a regulator of aquaporin-type water channels. The antibody is specific to Podoplanin.

## Stockage

Stockage:  
Stocker à -20 °C. Éviter toute exposition à la lumière. Stable pendant un an après l'expédition.  
Tampon de stockage:  
PBS avec glycérol à 50 %, Proclin300 à 0,05 % et BSA à 0,5 %, pH 7,3.  
L'aliquotage n'est pas nécessaire pour le stockage à -20C

**\*\*\* Les 20ul contiennent 0,1% de BSA.**

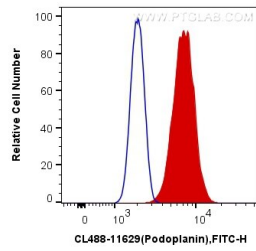
For technical support and original validation data for this product please contact:

T: 1 (888) 4PTGLAB (1-888-478-4522) (toll free  
in USA), or 1(312) 455-8498 (outside USA)

E: [proteintech@ptglab.com](mailto:proteintech@ptglab.com)  
W: [ptglab.com](http://ptglab.com)

**This product is exclusively available under Proteintech Group brand and is not available to purchase from any other manufacturer.**

## Données de validation sélectionnées



1X10<sup>6</sup> HEK-293 cells were intracellularly stained with 0.2 ug CoraLite® Plus 488 Anti-Human Podoplanin (CL488-11629) (red), or 0.2 ug Control Antibody. Cells were fixed with 4% PFA and permeabilized with Flow Cytometry Perm Buffer (PF00011-C).