

À des fins de recherche uniquement

# Anticorps Polyclonal de lapin anti-ASGR1



Numéro de catalogue: **CL488-11739**

## Informations de base

Numéro de catalogue: CL488-11739	Numéro d'acquisition GenBank: BC032130	Méthode de purification: Purification par affinité contre l'antigène
Taille: 100ul , Concentration: 1000 µg/ml by Nanodrop;	Identification du gène (NCBI): 432	Dilutions recommandées: IF 1:50-1:500
Hôte: Lapin	Nom complet: asialoglycoprotein receptor 1	Excitation/Emission maximum wavelengths: 493 nm / 522 nm
Isotype: IgG	MW calculé: 291 aa, 33 kDa	
Immunogen Catalog Number: AG2310		

## Applications

Applications testées: FC (Intra), IF	Contrôles positifs: IF : tissu hépatique de rat, tissu de cancer du foie humain
Spécificité de l'espèce: Humain, rat, souris	

## Informations générales

Asialoglycoprotein receptor (ASGPR), also known as the hepatic galactose/N-acetylglucosamine (GlcNAc) receptor or Ashwell receptor, is a C-type lectin expressed exclusively in hepatic parenchymal cells. ASGPR consists of two subunits, a major subunit (ASGR1, HL-1) and a minor subunit (ASGR2, HL-2), and specifically recognizes terminal  $\beta$ -linked galactose or GlcNAc on circulating glycoproteins or cells. This receptor plays a critical role in serum glycoprotein homeostasis by mediating the endocytosis and lysosomal degradation of glycoproteins that contain terminal galactose or GlcNAc residues. ASGPR may facilitate hepatic infection by multiple viruses including hepatitis B, and is also a target for liver-specific drug delivery. This antibody is conjugated with CL488, Ex/Em 488 nm/515 nm.

## Stockage

**Stockage:**  
Stocker à -20 °C. Éviter toute exposition à la lumière. Stable pendant un an après l'expédition.  
**Tampon de stockage:**  
PBS avec glycérol à 50 %, Proclin300 à 0,05 % et BSA à 0,5 %, pH 7,3.  
L'aliquotage n'est pas nécessaire pour le stockage à -20C

**\*\*\* Les 20ul contiennent 0,1% de BSA.**

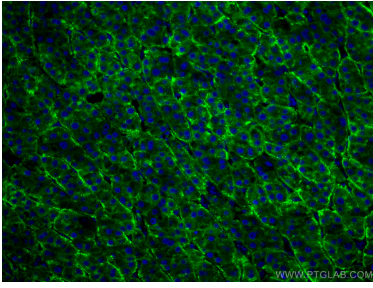
For technical support and original validation data for this product please contact:

T: 1 (888) 4PTGLAB (1-888-478-4522) (toll free in USA), or 1(312) 455-8498 (outside USA)

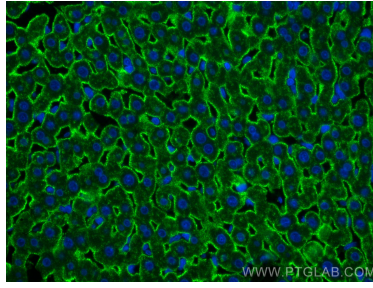
E: [proteintech@ptglab.com](mailto:proteintech@ptglab.com)  
W: [ptglab.com](http://ptglab.com)

**This product is exclusively available under Proteintech Group brand and is not available to purchase from any other manufacturer.**

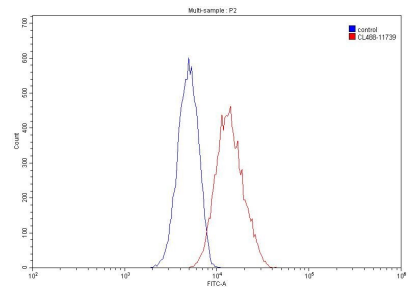
## Données de validation sélectionnées



Immunofluorescent analysis of (4% PFA) fixed human liver cancer tissue using CoraLite® Plus 488 ASGR1 antibody (CL488-11739) at dilution of 1:200.



Immunofluorescent analysis of (4% PFA) fixed rat liver tissue using CoraLite® Plus 488 ASGR1 antibody (CL488-11739) at dilution of 1:200.



1X10<sup>6</sup> HepG2 cells were stained with 0.20ug ASGR1 antibody (CL488-11739, red) and control antibody (blue). Fixed with 90% MeOH.