

À des fins de recherche uniquement

Anticorps Polyclonal de lapin anti-TOM20



Numéro de catalogue: **CL488-11802**

Phare

2 Publications

Informations de base

Numéro de catalogue: CL488-11802	Numéro d'acquisition GenBank: BC000882	Méthode de purification: Purification par affinité contre l'antigène
Taille: 100ul , Concentration: 1000 µg/ml by Nanodrop;	Identification du gène (NCBI): 9804	Dilutions recommandées: IF 1:50-1:500
Hôte: Lapin	Nom complet: translocase of outer mitochondrial membrane 20 homolog (yeast)	Excitation/Emission maximum wavelengths: 493 nm / 522 nm
Isotype: IgG	MW calculé: 145 aa, 16 kDa	
Immunogen Catalog Number: AG2378	MW observés: 16 kDa	

Applications

Applications testées: FC (Intra), IF	Contrôles positifs: IF : cellules HUVEC,
Demandes citées: IF	
Spécificité de l'espèce: Humain, rat, souris	
Espèces citées: Humain	

Informations générales

TOM20, also named as KIAA0016, belongs to the Tom20 family. It is a central component of the receptor complex responsible for the recognition and translocation of cytosolically synthesized mitochondrial preproteins. Together with TOM22, TOM20 functions as the transit peptide receptor at the surface of the mitochondrion outer membrane and facilitates the movement of preproteins into the TOM40 translocation pore. TOM20 is characterized as major docking receptors to mediate the recognition by different mechanisms.

Publications notables

Autrice	Pubmed ID	Journal	Application
Werner J Geldenhuys	34496224	Free Radic Biol Med	IF
Neeraja Purandare	36339251	iScience	IF

Stockage

Stockage:
Stocker à -20 °C. Éviter toute exposition à la lumière.
Tampon de stockage:
PBS avec glycérol à 50 %, Proclin300 à 0,05 % et BSA à 0,5 %, pH 7,3.
L'aliquotage n'est pas nécessaire pour le stockage à -20C

*** Les 20ul contiennent 0,1% de BSA.

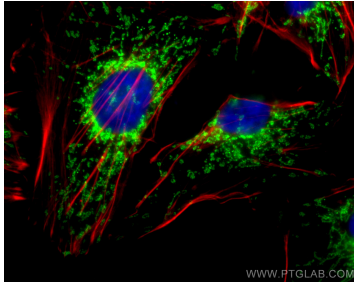
For technical support and original validation data for this product please contact:

T: 1 (888) 4PTGLAB (1-888-478-4522) (toll free in USA), or 1(312) 455-8498 (outside USA)

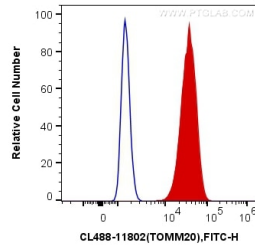
E: proteintech@ptglab.com
W: ptglab.com

This product is exclusively available under Proteintech Group brand and is not available to purchase from any other manufacturer.

Données de validation sélectionnées



Immunofluorescent analysis of (4% PFA) fixed HUVEC cells using CoraLite® Plus 488 TOM20 antibody (CL488-11802) at dilution of 1:200, CL594-Phalloidin (red).



1X10⁶ HeLa cells were intracellularly stained with 0.4 ug CoraLite® Plus 488 Anti-Human TOM20 (CL488-11802) (red), or 0.4 ug Control Antibody. Cells were fixed with 4% PFA and permeabilized with Flow Cytometry Perm Buffer (PF00011-C).