

À des fins de recherche uniquement

Anticorps Polyclonal de lapin anti-HOMER1



Numéro de catalogue: **CL488-12433**

Phare

Informations de base

Numéro de catalogue: CL488-12433	Numéro d'acquisition GenBank: BC015502	Méthode de purification: Purification par affinité contre l'antigène
Taille: 100ul , Concentration: 1000 µg/ml by Nanodrop;	Identification du gène (NCBI): 9456	Dilutions recommandées: IF 1:50-1:500
Hôte: Lapin	Nom complet: homer homolog 1 (Drosophila)	Excitation/Emission maxima wavelengths: 493 nm / 522 nm
Isotype: IgG	MW calculé: 40 kDa	
Immunogen Catalog Number: AG3109	MW observés: 46-48 kDa	

Applications

Applications testées: FC (Intra), IF	Contrôles positifs: IF : cellules PC-12,
Spécificité de l'espèce: Humain, rat, souris	

Informations générales

Human HOMER1, also named as SYN47, belongs to the Homer family. Human HOMER1 has some isoforms: HOMER1a, HOMER1b, HOMER1c, HOMER1e and HOMER1h. Mouse Homer1 also named as Vesl-1 and it has some isoforms: Vesl-1l, Vesl-1m, Vesl-1s, Homer1b, and Homer1d. HOMER1 is a postsynaptic density scaffolding protein. It is a neuronal immediate-early gene (IEG) that is enriched at excitatory synapses and binds mGluRs. In WB, the MW of HOMER1 is about 46-50kd, 40-43kd and 20-26kd.

Stockage

Stockage:
Stocker à -20 °C. Éviter toute exposition à la lumière. Stable pendant un an après l'expédition.
Tampon de stockage:
PBS avec glycérol à 50 %, Proclin300 à 0,05 % et BSA à 0,5 %, pH 7,3.
L'aliquotage n'est pas nécessaire pour le stockage à -20C

***** Les 20ul contiennent 0,1% de BSA.**

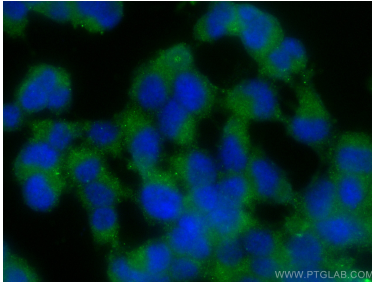
For technical support and original validation data for this product please contact:

T: 1 (888) 4PTGLAB (1-888-478-4522) (toll free in USA), or 1(312) 455-8498 (outside USA)

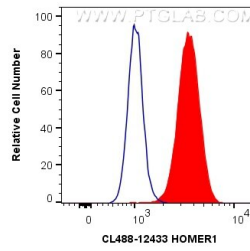
E: proteintech@ptglab.com
W: ptglab.com

This product is exclusively available under Proteintech Group brand and is not available to purchase from any other manufacturer.

Données de validation sélectionnées



Immunofluorescent analysis of (-20°C Ethanol) fixed PC-12 cells using CoralLite® Plus 488 HOMER1 antibody (CL488-12433) at dilution of 1:200.



1X10⁶ SH-SY5Y cells were intracellularly stained with 0.8 ug CoralLite® Plus 488 Anti-Human HOMER1 (CL488-12433) (red), or 0.8 ug Isotype Control. Cells were fixed with 4% PFA and permeabilized with Flow Cytometry Perm Buffer (PF00011-C).