

À des fins de recherche uniquement

Anticorps Polyclonal de lapin anti- IMPDH2



Numéro de catalogue: **CL488-12948**

Phare

Informations de base

Numéro de catalogue: CL488-12948	Numéro d'acquisition GenBank: BC012840	Méthode de purification: Purification par affinité contre l'antigène
Taille: 100ul , Concentration: 1000 µg/ml by Nanodrop;	Identification du gène (NCBI): 3615	Dilutions recommandées: IF 1:50-1:500
Hôte: Lapin	Nom complet: IMP (inosine monophosphate) dehydrogenase 2	Excitation/Emission maxima wavelengths: 493 nm / 522 nm
Isotype: IgG	MW calculé 514 aa, 56 kDa	
Immunogen Catalog Number: AG3632	MW observés: 56 kDa	

Applications

Applications testées: IF	Contrôles positifs: IF : cellules HeLa,
Spécificité de l'espèce: Humain, rat, souris	

Informations générales

IMPDH2, also named as IMPD2, belongs to the IMPDH/GMPR family. It is a rate limiting enzyme in the de novo synthesis of guanine nucleotides and therefore is involved in the regulation of cell growth. It may also have a role in the development of malignancy and the growth progression of some tumors. IMPDH2 is a key enzyme in the purine nucleotide biosynthetic pathway and constitutes a pivotal biological target for immunosuppressant and antiviral drugs. (PMID:21181270) IMPDH2 is highly enriched in RR(filamentous rods and rings). This antibody may have cross reaction with IMPDH1 due to the high homology.

Stockage

Stockage:
Stocker à -20 °C. Éviter toute exposition à la lumière.
Tampon de stockage:
PBS avec glycérol à 50 %, Proclin300 à 0,05 % et BSA à 0,5 %, pH 7,3.
L'aliquotage n'est pas nécessaire pour le stockage à -20C

***** Les 20ul contiennent 0,1% de BSA.**

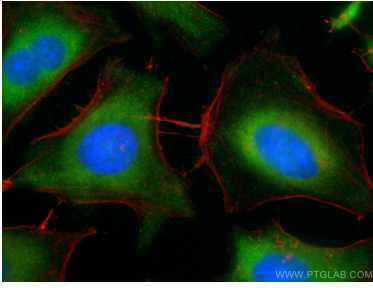
For technical support and original validation data for this product please contact:

T: 1 (888) 4PTGLAB (1-888-478-4522) (toll free in USA), or 1(312) 455-8498 (outside USA)

E: proteintech@ptglab.com
W: ptglab.com

This product is exclusively available under Proteintech Group brand and is not available to purchase from any other manufacturer.

Données de validation sélectionnées



Immunofluorescent analysis of (-20°C Methanol) fixed HeLa cells using CoraLite® Plus 488 IMPDH2 antibody (CL488-12948) at dilution of 1:100, CoraLite®594 Beta Actin antibody (CL594-66009, Clone: 2D4H5, red).