

À des fins de recherche uniquement

# Anticorps Polyclonal de lapin anti-DRP1 (C-terminal)



Numéro de catalogue: CL488-12957

Phare

## Informations de base

Numéro de catalogue:

CL488-12957

Numéro d'acquisition GenBank:

BC024590

Méthode de purification:

Purification par affinité contre l'antigène

Taille:

100ul, Concentration: 1000 µg/ml by Nanodrop;

Identification du gène (NCBI):

10059

Excitation/Emission maxima wavelengths:

493 nm / 522 nm

Hôte:

Lapin

Nom complet:

dynamin 1-like

MW calculé

710 aa, 79 kDa

Isotype:

IgG

MW observés:

75-80 kDa

Immunogen Catalog Number:

AG3644

## Applications

Applications testées:

FC (Intra)

Spécificité de l'espèce:

Humain, rat, souris

## Informations générales

DNM1L (Dynamin-1-like protein), also known as dynamin-related protein 1 (DRP1), belongs to the dynamin family of large GTPases that mediate membrane remodeling during a variety of cellular processes. DNM1L has an important role in the division of growing mitochondria and peroxisomes and also mediates outer mitochondrial membrane fission in mammalian cells. DNM1L is ubiquitously expressed with abundant expression in skeletal muscle, heart, kidney and brain. Variable isoforms of DNM1L have been reported in a tissue-specific manner due to the alternative splicing.

## Stockage

Stockage:

Stocker à -20 °C. Éviter toute exposition à la lumière.

Tampon de stockage:

PBS avec glycérol à 50 %, Proclin300 à 0,05 % et BSA à 0,5 %, pH 7,3.

L'aliquotage n'est pas nécessaire pour le stockage à -20C

\*\*\* Les 20ul contiennent 0,1% de BSA.

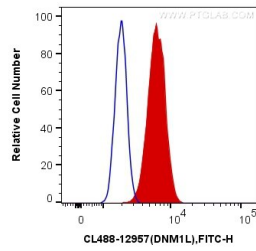
For technical support and original validation data for this product please contact:

T: 1 (888) 4PTGLAB (1-888-478-4522) (toll free in USA), or 1(312) 455-8498 (outside USA)

E: [proteintech@ptglab.com](mailto:proteintech@ptglab.com)  
W: [ptglab.com](http://ptglab.com)

This product is exclusively available under Proteintech Group brand and is not available to purchase from any other manufacturer.

## Données de validation sélectionnées



1X10<sup>6</sup> HeLa cells were intracellularly stained with 0.4 ug Coralite® Plus 488 Anti-Human DRP1 (C-terminal) (CL488-12957) (red), or 0.4 ug Control Antibody. Cells were fixed with 4% PFA and permeabilized with Flow Cytometry Perm Buffer (PF00011-C).