

À des fins de recherche uniquement

# Anticorps Polyclonal de lapin anti-PYCR1



Numéro de catalogue: **CL488-13108** **Phare**

## Informations de base

Numéro de catalogue: CL488-13108	Numéro d'acquisition GenBank: BC022244	Méthode de purification: Purification par affinité contre l'antigène
Taille: 100ul , Concentration: 1000 µg/ml by Nanodrop;	Identification du gène (NCBI): 5831	Dilutions recommandées: IF 1:50-1:500
Hôte: Lapin	Nom complet: pyrroline-5-carboxylate reductase 1	Excitation/Emission maxima wavelengths: 493 nm / 522 nm
Isotype: IgG	MW calculé 319 aa, 33.8 kDa	
Immunogen Catalog Number: AG3764	MW observés: 33 kDa, 35 kDa	

## Applications

Applications testées: FC (Intra), IF	Contrôles positifs: IF : cellules HepG2,
Spécificité de l'espèce: Humain	

## Informations générales

PYCR1, also named as P5CR1, belongs to the pyrroline-5-carboxylate reductase family. It is a housekeeping enzyme that catalyzes the last step in proline biosynthesis. PYCR1 can utilize both NAD and NADP, but has higher affinity for NAD. It is involved in the cellular response to oxidative stress. Mutation in PYCR1 will cause ARCL type II (ARCL2B). Some mutation will cause DeBary syndrome (DBS) which is characterized by progeroid features, ophthalmological abnormalities, intrauterine growth retardation, and cutis laxa. The MW of PYCR1 is about 33-35 kDa. PYCR1 has 3 isoforms produced by alternative splicing. This antibody may have cross reaction to PYCR2 due to the high homology.

## Stockage

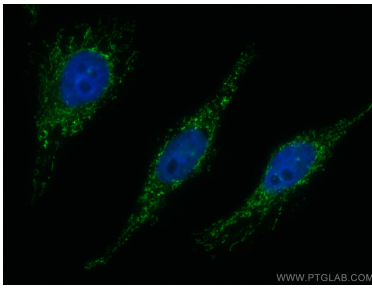
**Stockage:**  
Stocker à -20 °C. Éviter toute exposition à la lumière.  
**Tampon de stockage:**  
PBS avec glycérol à 50 %, Proclin300 à 0,05 % et BSA à 0,5 %, pH 7,3.  
L'aliquotage n'est pas nécessaire pour le stockage à -20C

**\*\*\* Les 20ul contiennent 0,1% de BSA.**

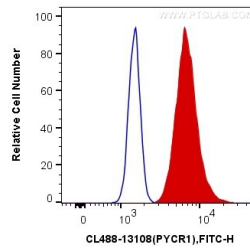
For technical support and original validation data for this product please contact:  
T: 1 (888) 4PTGLAB (1-888-478-4522) (toll free in USA), or 1(312) 455-8498 (outside USA) E: proteintech@ptglab.com W: ptglab.com

This product is exclusively available under Proteintech Group brand and is not available to purchase from any other manufacturer.

## Données de validation sélectionnées



Immunofluorescent analysis of (4% PFA) fixed HepG2 cells using CoraLite® Plus 488 PYCR1 antibody (CL488-13108) at dilution of 1:200.



1X10<sup>6</sup> HepG2 cells were intracellularly stained with 0.4 ug CoraLite® Plus 488 Anti-Human PYCR1 (CL488-13108) (red), or 0.4 ug Control Antibody. Cells were fixed with 4% PFA and permeabilized with Flow Cytometry Perm Buffer (PF00011-C).