

À des fins de recherche uniquement

Anticorps Polyclonal de lapin anti-MX1



Numéro de catalogue: **CL488-13750**

Phare

Informations de base

Numéro de catalogue:

CL488-13750

Numéro d'acquisition GenBank:

BC032602

Méthode de purification:

Purification par affinité contre l'antigène

Taille:

100ul, Concentration: 1000 µg/ml by 4599

Identification du gène (NCBI):

4599

Excitation/Emission maxima wavelengths:

493 nm / 522 nm

Nanodrop;

Nom complet:

Myxovirus resistance protein 1

Hôte:

Lapin

MW calculé

662 aa, 76 kDa

Isotype:

IgG

MW observés:

76 kDa

Immunogen Catalog Number:

AG4692

Applications

Applications testées:

FC (Intra)

Spécificité de l'espèce:

Humain, souris

Informations générales

Mx1 (also known as MxA) is a GTPase that belongs to the Mx family of proteins, which are ubiquitous in eukaryotes and involved in the immune response to viral infections. The human Mx1 is localized in the cytoplasm interfering with the translation of viral proteins, whereas the mouse Mx1 accumulates in the nucleus and inhibits the primary transcription of viral RNA. Mx1 expression is induced by treatment with α/β IFN. This antibody can recognize the endogenous Mx1 protein in several tissues like lung and spleen.

Stockage

Stockage:

Stocker à -20 °C. Éviter toute exposition à la lumière. Stable pendant un an après l'expédition.

Tampon de stockage:

PBS avec glycérol à 50 %, Proclin300 à 0,05 % et BSA à 0,5 %, pH 7,3.

L'aliquotage n'est pas nécessaire pour le stockage à -20C

***** Les 20ul contiennent 0,1% de BSA.**

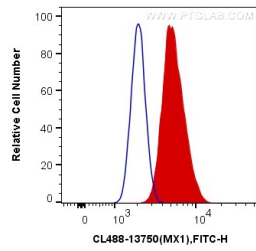
For technical support and original validation data for this product please contact:

T: 1 (888) 4PTGLAB (1-888-478-4522) (toll free in USA), or 1(312) 455-8498 (outside USA)

E: proteintech@ptglab.com
W: ptglab.com

This product is exclusively available under Proteintech Group brand and is not available to purchase from any other manufacturer.

Données de validation sélectionnées



1X10⁶ A549 cells were intracellularly stained with 0.4 ug CoraLite® Plus 488 Anti-Human MX1 (CL488-13750) (red), or 0.4 ug Control Antibody. Cells were fixed with 4% PFA and permeabilized with Flow Cytometry Perm Buffer (PF00011-C).