

À des fins de recherche uniquement

# Anticorps Polyclonal de lapin anti-IFT88



Numéro de catalogue: **CL488-13967** **Phare**

## Informations de base

<b>Numéro de catalogue:</b> CL488-13967	<b>Numéro d'acquisition GenBank:</b> BC030776	<b>Méthode de purification:</b> Purification par affinité contre l'antigène
<b>Taille:</b> 100ul , Concentration: 1000 µg/ml by Nanodrop;	<b>Identification du gène (NCBI):</b> 8100	<b>Dilutions recommandées:</b> IF 1:50-1:500
<b>Hôte:</b> Lapin	<b>Nom complet:</b> intraflagellar transport 88 homolog (Chlamydomonas)	<b>Excitation/Emission maxima wavelengths:</b> 493 nm / 522 nm
<b>Isotype:</b> IgG	<b>MW calculé</b> 94 kDa	
<b>Immunogen Catalog Number:</b> AG4980	<b>MW observés:</b> 88-95 kDa	

## Applications

<b>Applications testées:</b> IF	<b>Contrôles positifs:</b> IF : cellules MDCK,
<b>Spécificité de l'espèce:</b> canin, Humain, rat, souris	

## Informations générales

Intraflagellar transport (IFT), mediated by molecular motors and IFT particles, is an important transport process that occurs in the cilium and has been shown to be essential for the assembly and maintenance of cilia and flagella in many organisms. IFT88 (intraflagellar transport protein 88; also known as TG737 or TTC10) is a component of IFT particles and required for cilium biogenesis. Defects in IFT88/Tg737 lead to polycystic kidney disease (11062270). IFT88 localizes to spindle poles during mitosis and is required for spindle orientation in mitosis (21441926). This antibody was raised against the C-terminal region of human IFT88 and can detect the endogenous level of IFT88.

## Stockage

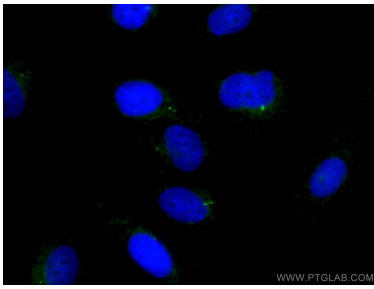
**Stockage:**  
Stocker à -20 °C. Éviter toute exposition à la lumière.  
**Tampon de stockage:**  
PBS avec glycérol à 50 %, Proclin300 à 0,05 % et BSA à 0,5 %, pH 7,3.  
L'aliquotage n'est pas nécessaire pour le stockage à -20C

**\*\*\* Les 20ul contiennent 0,1% de BSA.**

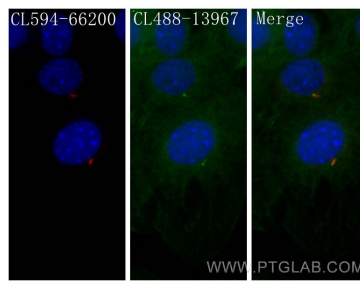
For technical support and original validation data for this product please contact:  
T: 1 (888) 4PTGLAB (1-888-478-4522) (toll free in USA), or 1(312) 455-8498 (outside USA) E: proteintech@ptglab.com W: ptglab.com

**This product is exclusively available under Proteintech Group brand and is not available to purchase from any other manufacturer.**

## Données de validation sélectionnées



Immunofluorescent analysis of (4% PFA) fixed MDCK cells using CoraLite® Plus 488 IFT88 antibody (CL488-13967) at dilution of 1:200.



Immunofluorescent analysis of (4% PFA) fixed C2C12 cells using CoraLite® Plus 488 IFT88 antibody (CL488-13967) at dilution of 1:200, CoraLite®594 acetylated Tubulin(Lys40) antibody (CL594-66200, Clone: 7E5H8, red).