

À des fins de recherche uniquement

# Anticorps Polyclonal de lapin anti-CEP250/CNAP1



Numéro de catalogue: **CL488-14498**

## Informations de base

Numéro de catalogue: CL488-14498	Numéro d'acquisition GenBank: BC001433	Méthode de purification: Purification par affinité contre l'antigène
Taille: 100ul , Concentration: 1000 µg/ml by Nanodrop;	Identification du gène (NCBI): 11190	Dilutions recommandées: IF 1:50-1:500
Hôte: Lapin	Nom complet: centrosomal protein 250kDa	Excitation/Emission maxima wavelengths: 493 nm / 522 nm
Isotype: IgG	MW calculé: 281 kDa	
Immunogen Catalog Number: AG5925	MW observés: 250 kDa	

## Applications

Applications testées: IF	Contrôles positifs: IF : cellules HeLa, cellules MCF-7
Spécificité de l'espèce: Humain	

## Informations générales

CEP250, also known as C-Nap1, is a 250 kDa coiled-coil protein that localizes to the proximal ends of mother and daughter centrioles. It is required for centriole-centriole cohesion during interphase of the cell cycle. It dissociates from the centrosomes when parental centrioles separate at the beginning of mitosis. The protein associates with and is phosphorylated by NIMA-related kinase 2, which is also associated with the centrosome.

## Stockage

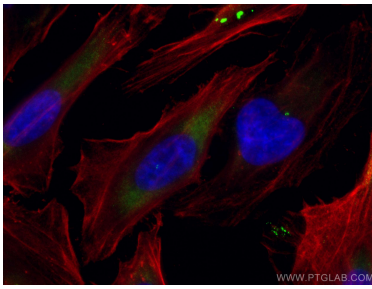
**Stockage:**  
Stocker à -20 °C. Éviter toute exposition à la lumière.  
**Tampon de stockage:**  
PBS avec glycérol à 50 %, Proclin300 à 0,05 % et BSA à 0,5 %, pH 7,3.  
L'aliquotage n'est pas nécessaire pour le stockage à -20C

**\*\*\* Les 20ul contiennent 0,1% de BSA.**

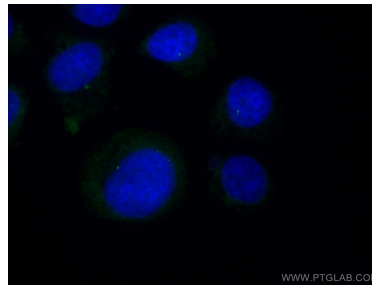
For technical support and original validation data for this product please contact:  
T: 1 (888) 4PTGLAB (1-888-478-4522) (toll free in USA), or 1(312) 455-8498 (outside USA)      E: proteintech@ptglab.com  
W: ptglab.com

This product is exclusively available under Proteintech Group brand and is not available to purchase from any other manufacturer.

## Données de validation sélectionnées



Immunofluorescent analysis of (-20°C Methanol) fixed HeLa cells using CoraLite® Plus 488 CEP250/CNAP1 antibody (CL488-14498) at dilution of 1:100, CoraLite® 594 Beta Actin antibody (CL594-66009, Clone: 2D4H5, red).



Immunofluorescent analysis of (-20°C Ethanol) fixed MCF-7 cells using CoraLite® Plus 488 CEP250/CNAP1 antibody (CL488-14498) at dilution of 1:100.