

À des fins de recherche uniquement

Anticorps Polyclonal de lapin anti-TOM70



Numéro de catalogue: **CL488-14528** **Phare**

Informations de base

| | | |
|--|---|--|
| Numéro de catalogue: CL488-14528 | Numéro d'acquisition GenBank: BC052994 | Méthode de purification: Purification par affinité contre l'antigène |
| Taille: 100ul , Concentration: 1000 µg/ml by Nanodrop; | Identification du gène (NCBI): 9868 | Excitation/Emission maxima wavelengths: 493 nm / 522 nm |
| Hôte: Lapin | Nom complet: translocase of outer mitochondrial membrane 70 homolog A (S. cerevisiae) | |
| Isotype: IgG | MW calculé 67 kDa | |
| Immunogen Catalog Number: AG6027 | | |

Applications

Applications testées:
FC (Intra)

Spécificité de l'espèce:
Humain, rat, souris

Informations générales

TOMM70A (or TOM70) is a mitochondrial import receptor responsible for the import of cytosol synthesized precursor proteins into the mitochondria. Tom70 is a member of the tetratricopeptide repeat (TPR) co-chaperone family and contains a conserved TPR clamp domain for interaction with Hsc70 and Hsp90. Recently overexpression of TOM70 has been linked to chemoresistance to drugs in breast cancer cell lines. It is also believed that Tom70 is significantly associated with breast cancer relapse and may predict the recurrence of ovarian cancer.

Stockage

Stockage:
Stocker à -20 °C. Éviter toute exposition à la lumière. Stable pendant un an après l'expédition.

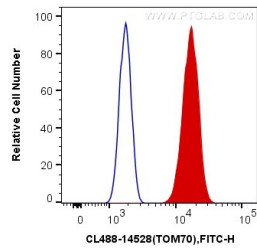
Tampon de stockage:
PBS avec glycérol à 50 %, Proclin300 à 0,05 % et BSA à 0,5 %, pH 7,3.
L'aliquotage n'est pas nécessaire pour le stockage à -20C

***** Les 20ul contiennent 0,1% de BSA.**

For technical support and original validation data for this product please contact:
T: 1 (888) 4PTGLAB (1-888-478-4522) (toll free in USA), or 1(312) 455-8498 (outside USA) E: proteintech@ptglab.com W: ptglab.com

This product is exclusively available under Proteintech Group brand and is not available to purchase from any other manufacturer.

Données de validation sélectionnées



1X10⁶ HepG2 cells were intracellularly stained with 0.4 ug CoraLite® Plus 488 Anti-Human TOM70 (CL488-14528) (red), or 0.4 ug Control Antibody. Cells were fixed with 4% PFA and permeabilized with Flow Cytometry Perm Buffer (PF00011-C).