

À des fins de recherche uniquement

# Anticorps Polyclonal de lapin anti-CD13



Numéro de catalogue: **CL488-14553**

## Informations de base

|  |   |  |
|--|---|--|
| <b>Numéro de catalogue:</b><br>CL488-14553                       | <b>Numéro d'acquisition GenBank:</b><br>BC058928        | <b>Méthode de purification:</b><br>Purification par affinité contre l'antigène |
| <b>Taille:</b><br>100ul , Concentration: 1000 µg/ml by Nanodrop; | <b>Identification du gène (NCBI):</b><br>290            | <b>Dilutions recommandées:</b><br>IF 1:50-1:500                                |
| <b>Hôte:</b><br>Lapin  | <b>Nom complet:</b><br>alanyl (membrane) aminopeptidase | <b>Excitation/Emission maxima wavelengths:</b><br>493 nm / 522 nm              |
| <b>Isotype:</b><br>IgG   | <b>MW calculé:</b><br>110 kDa                           |  |
| <b>Immunogen Catalog Number:</b><br>AG5976                       |   |  |

## Applications

|  |   |
|--|---|
| <b>Applications testées:</b><br>IF                     | <b>Contrôles positifs:</b><br>IF : tissu rénal de souris, |
| <b>Spécificité de l'espèce:</b><br>Humain, rat, souris |   |

## Informations générales

CD13, also named as APN, ANPEP(aminopeptidase N) or PEPN, is a heavily glycosylated, ~150-240 kDa, type-II membrane, expressed by most cells of myeloid origin including monocytes, macrophages, granulocytes, and their hematopoietic precursors. It is also abundantly expressed in the brush border of epithelial cells from renal proximal tubules and small intestine, in prostatic epithelial cells, in bile duct canaliculi, in mast cells, and, in some cases, in fibroblasts and smooth muscle cells. CD13 is a multifunctional protein and plays varying roles in cell migration, cell proliferation, cell differentiation and so on. CD13 participates in angiogenesis generating and modulating angiogenic signals, and can be a marker of angiogenic vessels. CD13 is also a pan-myeloid marker, present on mature granulocytes and monocytes. (PMID: 8805662, 10098327, 18603472, 18097955, 17897790, 17888402, 21339174)

## Stockage

**Stockage:**  
Stocker à -20 °C. Éviter toute exposition à la lumière.  
**Tampon de stockage:**  
PBS avec glycérol à 50 %, Proclin300 à 0,05 % et BSA à 0,5 %, pH 7,3.  
L'aliquotage n'est pas nécessaire pour le stockage à -20C

**\*\*\* Les 20ul contiennent 0,1% de BSA.**

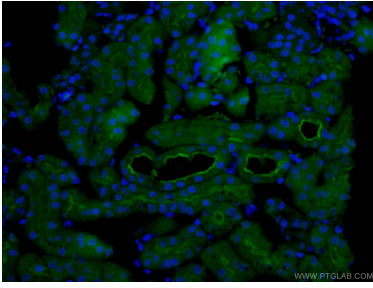
For technical support and original validation data for this product please contact:

T: 1 (888) 4PTGLAB (1-888-478-4522) (toll free in USA), or 1(312) 455-8498 (outside USA)

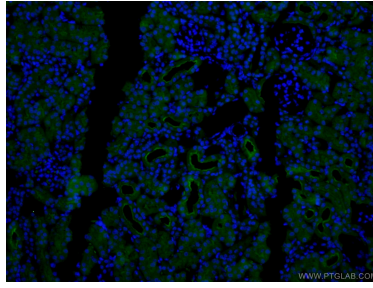
E: [proteintech@ptglab.com](mailto:proteintech@ptglab.com)  
W: [ptglab.com](http://ptglab.com)

**This product is exclusively available under Proteintech Group brand and is not available to purchase from any other manufacturer.**

## Données de validation sélectionnées



Immunofluorescent analysis of (4% PFA) fixed mouse kidney tissue using CL488-14553 (CD13 antibody) at dilution of 1:50.



Immunofluorescent analysis of (4% PFA) fixed mouse kidney tissue using CL488-14553 (CD13 antibody) at dilution of 1:50.