

À des fins de recherche uniquement

# Anticorps Polyclonal de lapin anti-REEP5



Numéro de catalogue: **CL488-14643**

Phare

## Informations de base

<b>Numéro de catalogue:</b> CL488-14643	<b>Numéro d'acquisition GenBank:</b> BC065926	<b>Méthode de purification:</b> Purifié par affinité contre l'antigène
<b>Taille:</b> 100ul , Concentration: 1000 µg/ml by Nanodrop;	<b>Identification du gène (NCBI):</b> 7905	<b>Dilutions recommandées:</b> IF 1:50-1:500
<b>Hôte:</b> Lapin	<b>Nom complet:</b> receptor accessory protein 5	<b>Excitation/Emission maxima wavelengths:</b> 493 nm / 522 nm
<b>Isotype:</b> IgG	<b>MW calculé:</b> 21 kDa	
<b>Immunogen Catalog Number:</b> AG6229	<b>MW observés:</b> 18-21 kDa	

## Applications

<b>Applications testées:</b> FC (Intra), IF	<b>Contrôles positifs:</b> IF : cellules A549,
<b>Spécificité de l'espèce:</b> Humain, rat, souris	

## Informations générales

REEP5 (receptor expression-enhancing protein 5), also named as C5orf18, DP1 or TB2, is a membrane protein belonging to DP1/Yop1p protein family. All REEP proteins contain a conserved TB2/DP1, HVA22 domain which is involved in intracellular trafficking and secretion (PMID: 19123125). REEP5 is expressed in circumvallate papillae and testis, and may have the function to influence functional cell surface expression of taste receptors (PMID: 16720576). REEP5 can interact with atlastins (ATL1 and ATL2) which are involved in modulating the structure of ER network (PMID: 19665976).

## Stockage

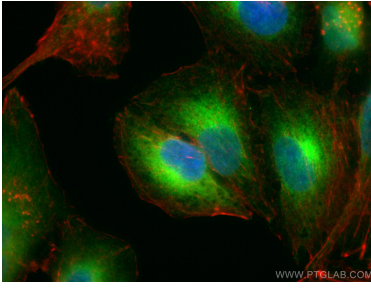
**Stockage:**  
Stocker à -20 °C. Éviter toute exposition à la lumière.  
**Tampon de stockage:**  
PBS avec glycérol à 50 %, Proclin300 à 0,05 % et BSA à 0,5 %, pH 7,3.  
L'aliquotage n'est pas nécessaire pour le stockage à -20C

**\*\*\* Les 20ul contiennent 0,1% de BSA.**

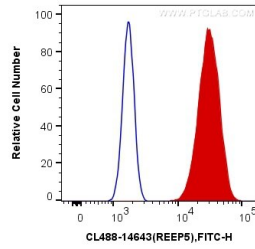
For technical support and original validation data for this product please contact:  
T: 1 (888) 4PTGLAB (1-888-478-4522) (toll free in USA), or 1(312) 455-8498 (outside USA)  
E: proteintech@ptglab.com  
W: ptglab.com

This product is exclusively available under Proteintech Group brand and is not available to purchase from any other manufacturer.

## Données de validation sélectionnées



Immunofluorescent analysis of (4% PFA) fixed A549 cells using CoraLite® Plus 488-conjugated REEP5 antibody (CL488-14643) at dilution of 1:100. F-actin is stained using CL555-phalloidin (red) and DNA is stained by DAPI (blue).



1X10<sup>6</sup> HeLa cells were intracellularly stained with 0.4 ug CoraLite® Plus 488 Anti-Human REEP5 (CL488-14643) (red), or 0.4 ug Control Antibody. Cells were fixed with 4% PFA and permeabilized with Flow Cytometry Perm Buffer (PF00011-C).